

Part Number:
1990687

Models:
Classic 350, Classic 500

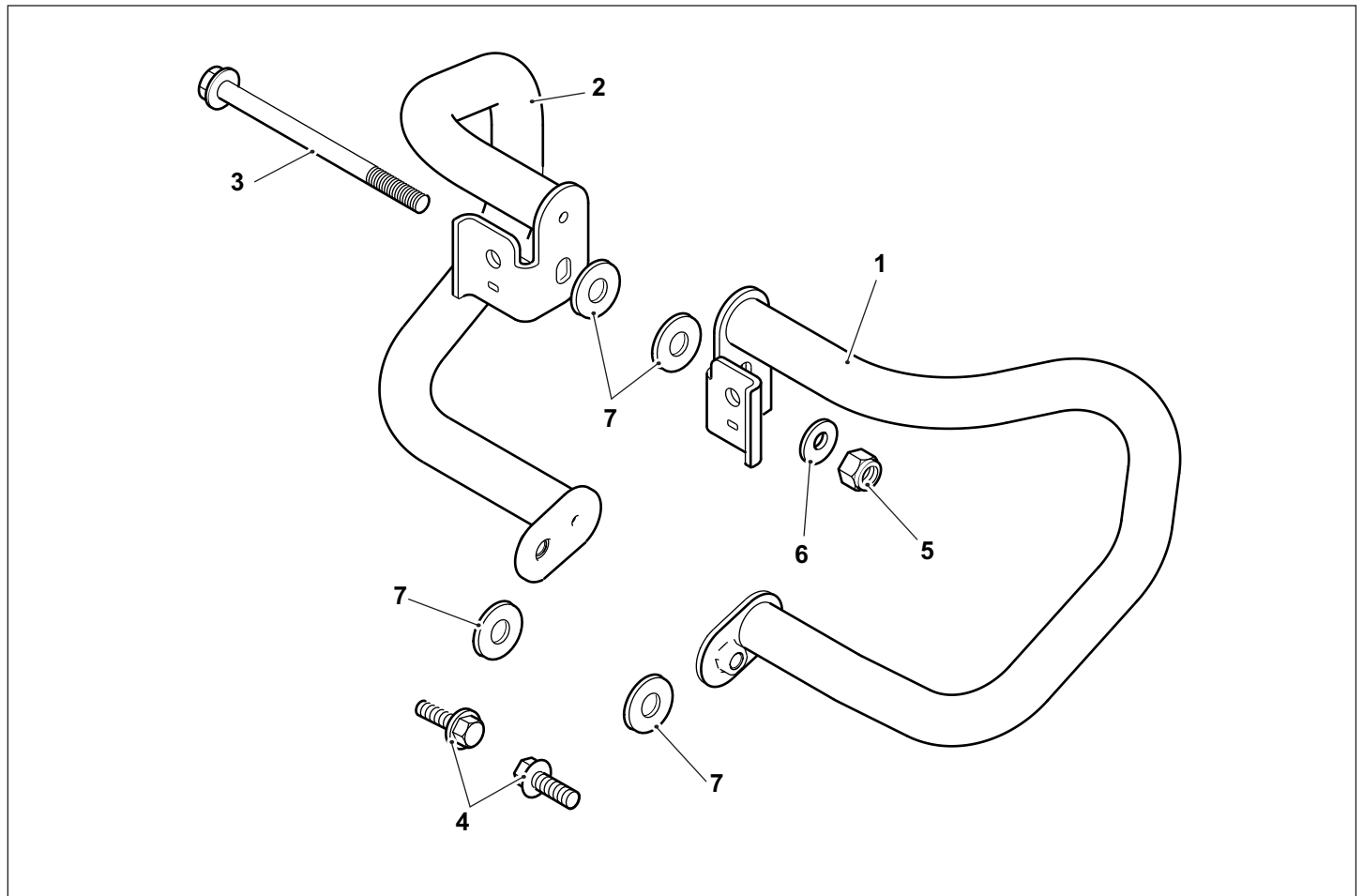
WARNING: Royal Enfield genuine accessories are designed to fit only the specific Royal Enfield motorcycle(s) that are specified above. They should not be fitted to any other type of motorcycle. Pay particular attention to the warnings and cautions contained in this instruction, failure to do so may result in an incorrect installation of the accessory which could result in an unsafe riding condition and possible accident. If in any doubt always seek the help from your authorised Royal Enfield dealer.

WARNING: Before starting any accessory kit installation ensure the motorcycle is supported in a stable condition. Failure to support the motorcycle correctly could lead to motorcycle damage or personal injury.

WARNING: All fixings must be tightened to the torque values specified in this instruction. Failure to tighten fixings to the correct torque could result in an unsafe riding condition and possible accident.

CAUTION: Care should be taken when fitting any accessory kit. Incorrect handling kit components or the use of incorrect tools could lead to component or motorcycle damage.

NOTE: The content of this instruction is subject to change at any time without notice or liability. Royal Enfield reserves the right to revise the information presented at any time.



Item	Description	Qty
	Engine Guard, Left Hand	1
2	Engine Guard, Right Hand	1
	Fixing, M8 x 130mm	1

Item	Description	Qty
4	Fixing, M8 x 20mm	2
5	Locknut, M8	1
6	Washer, M8	1
7	Spacer	4

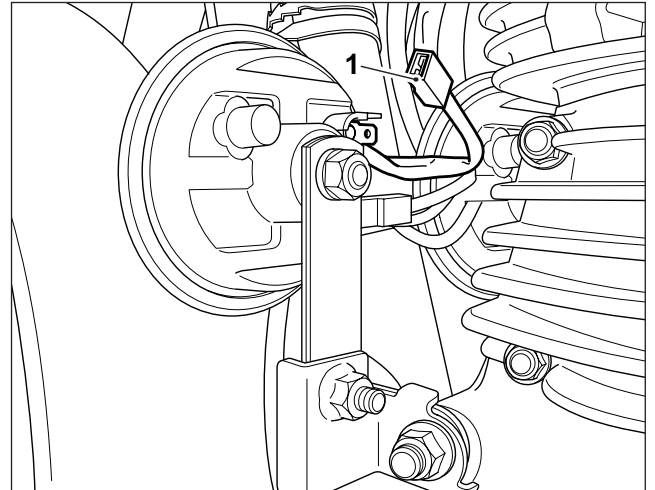


WARNING: If the engine has recently been running the exhaust system will be hot. Before working near to the exhaust system always allow time for the exhaust system to cool. Touching any part of a hot exhaust system will cause burn injuries.

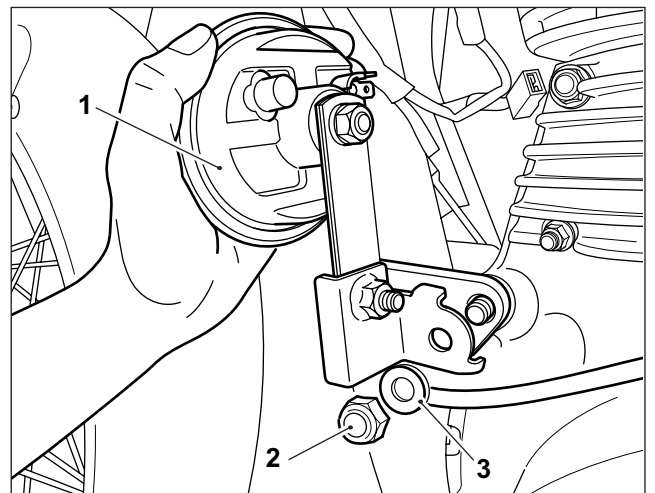
NOTE: The accessory engine guard kit can be fitted to motorcycles with, or without an accessory sump guard. Follow the appropriate steps detailed in this instruction.

All Motorcycles

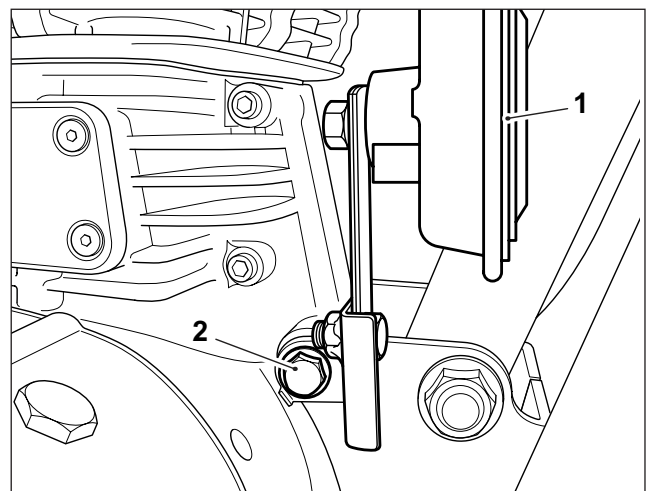
- 1 Disconnect the battery, negative connection first.
- 2 Disconnect the left hand and right hand horn connections(1), left hand side shown.



- 3 While supporting the horn and mounting bracket (1), remove the top engine mounting fixing nut (2) and washer (3) on the left hand side of the motorcycle. Remove the horn and bracket assembly from the fixing. Retain the horn and bracket assembly for reuse. Retain the fixing nut and washer for reuse if the accessory engine guards are removed.

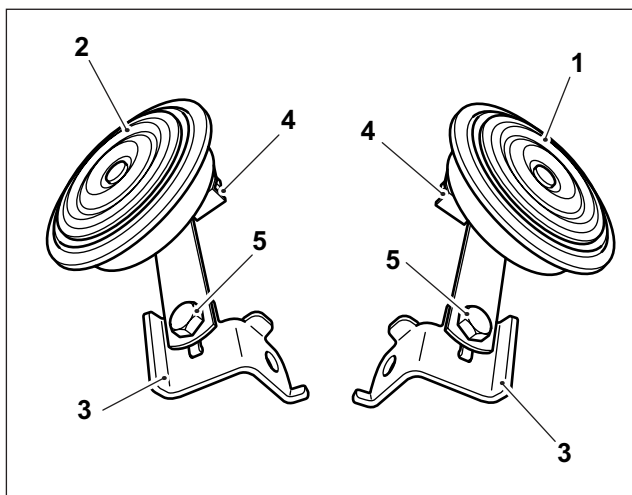


- 4 While supporting the horn and mounting bracket (1), remove the top engine mounting fixing (2) from the right hand side of the motorcycle. Remove the horn and bracket assembly from the fixing. Retain the horn and bracket assembly for reuse. Retain the fixing for reuse if the accessory engine guards are removed.



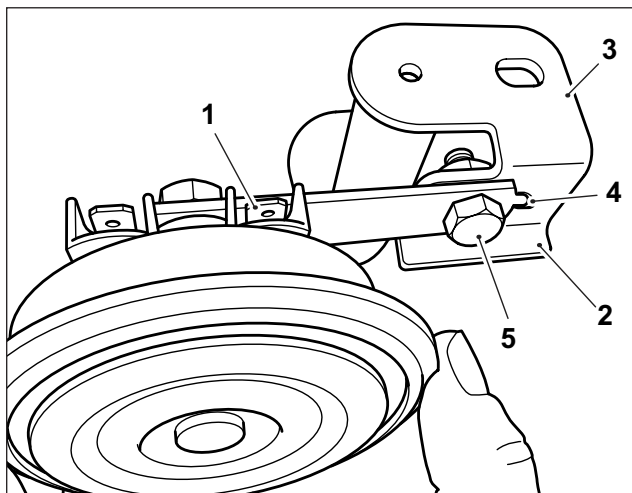
NOTE: Record the orientation of the left hand (1) and right hand (2) horns before removing from the engine mounting brackets (3). The electrical connections (4) should be positioned towards the centre of the motorcycle, as shown.

5 Remove the left hand (1) and right hand (1 & 2) horns from the lower mounting brackets (3). Retain the horns and fixings (5) for reuse. Retain the horn mounting brackets (3) for reuse if the accessory engine guards are removed



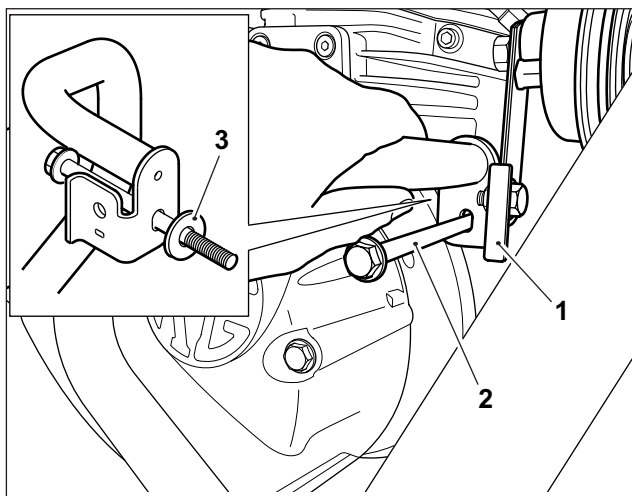
6 Fit the right hand horn (1) on to the integral bracket (2) at the top mounting position of the right hand accessory engine guard (3) in the orientation shown. Ensure the anti-rotation feature (4) of the horn bracket locates correctly in the engine guard mounting. Secure the horn to the engine guard with the original fixing (5). Tighten the fixing to ## Nm.

Repeat for the left hand horn and accessory engine guard.

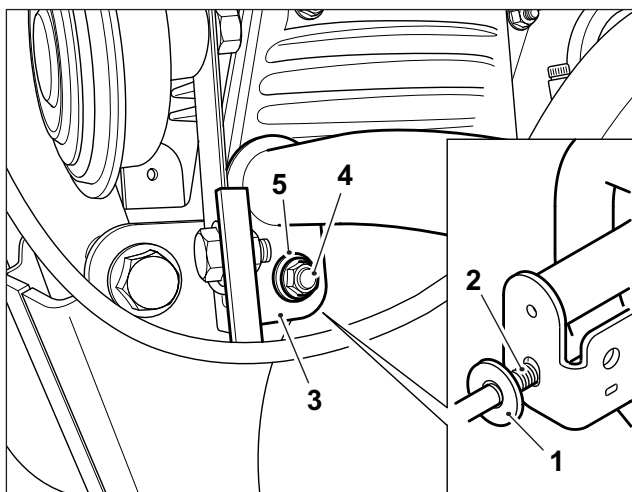


Motorcycles without Accessory Sump Guard Fitted

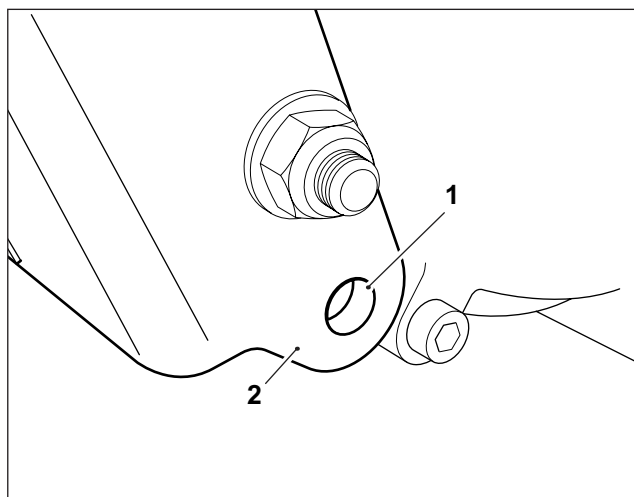
7 Align the top mounting of the right hand engine guard (1) with the top engine mounting location and fit an M8 x 130mm fixing (2) and spacer (3) from the kit between the engine mounting and engine guard, as shown.



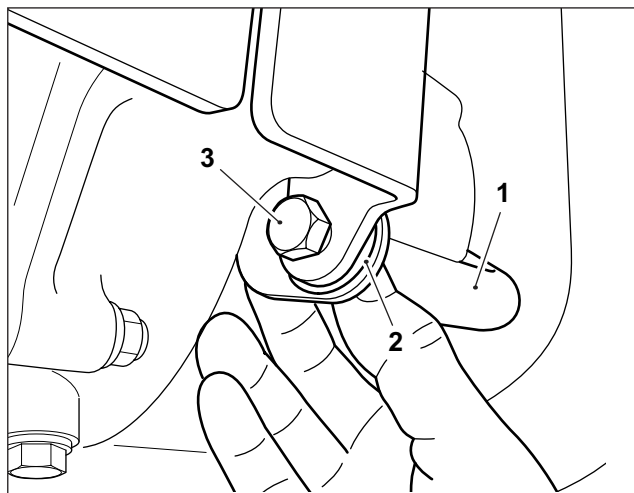
8 Fit a spacer (1) from the kit on to the M8 x 130mm fixing (2) on the left hand side of the motorcycle. Fit the top mounting of the left hand engine guard (3) on to the engine mounting fixing and fit an M8 lock nut (4) and washer (5) from the kit, as shown. Do not fully tighten the fixing at this stage.



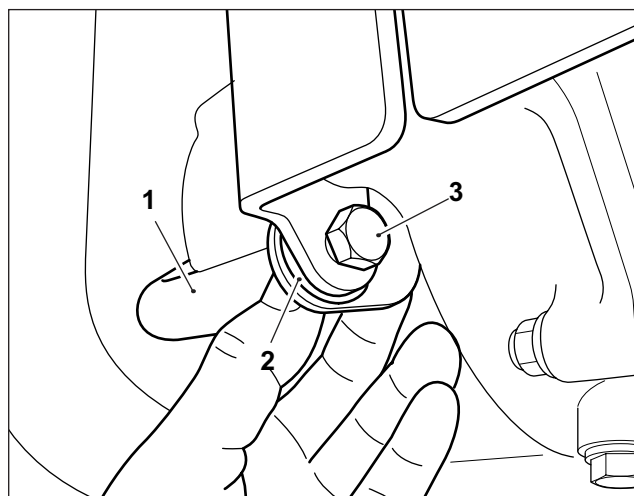
9 Ensure the motorcycle frame is clean. Pay particular attention to the area below the front lower engine mounting. The hole (1) through the frame (2) should be clear of any dirt or debris.



10 Align the lower mounting of the left hand engine guard (1) with the hole through the bottom of the motorcycle frame. Fit a spacer (2) between the motorcycle frame and the engine guard lower mounting and fit an M8 fixing (3) from the kit. Do not fully tighten the fixing at this stage.



11 Align the lower mounting of the right hand engine guard (1) with the hole through the bottom of the motorcycle frame. Fit a spacer (2) between the motorcycle frame and the engine guard lower mounting and fit an M8 fixing (3) from the kit. Do not fully tighten the fixing at this stage.

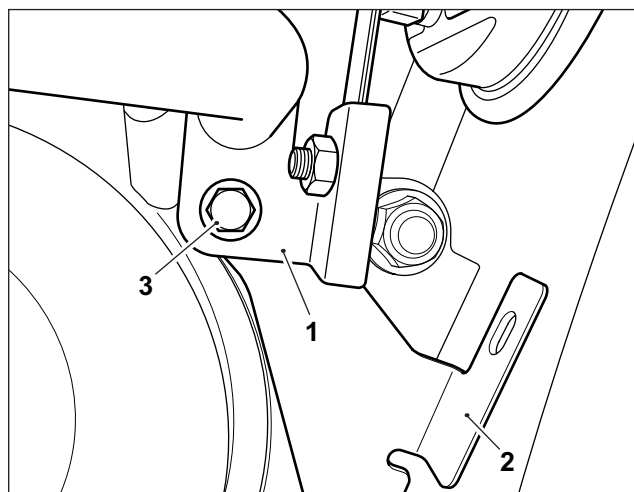


12 Tighten the engine guard upper fixing to **45Nm**.
Tighten the engine guard lower fixing to **22Nm**.

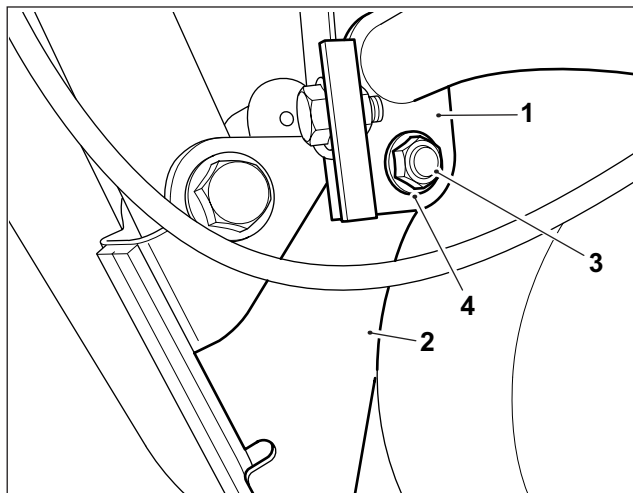
Motorcycles with Accessory Sump Guard Fitted

NOTE: The spacers provided in the kit are not required for engine guard installation when an accessory sump guard kit is fitted.

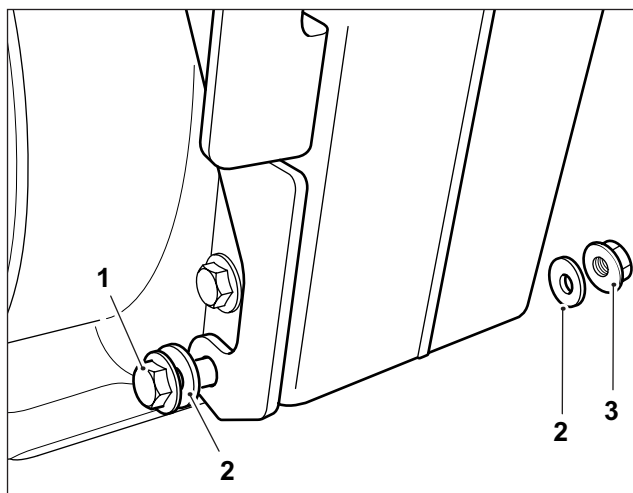
7 Fit the right hand engine guard top mounting (1) over the sump guard front mounting bracket (2), in the orientation shown and align with the top engine mounting. Fit a M8 x 130mm fixing (3) from the kit.



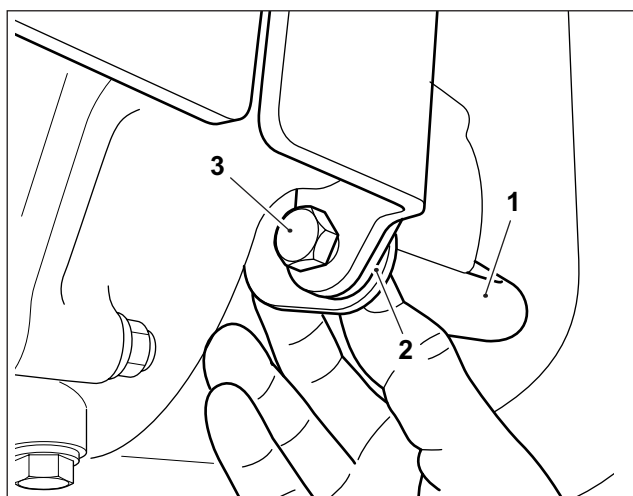
1 Fit the top mounting of the left hand engine guard (1) over the sump guard front mounting bracket (2), in the orientation shown and on to the M8 x 130mm engine mounting fixing. Fit an M8 lock nut (3) and washer (4) from the kit. Do not fully tighten the fixing at this stage.



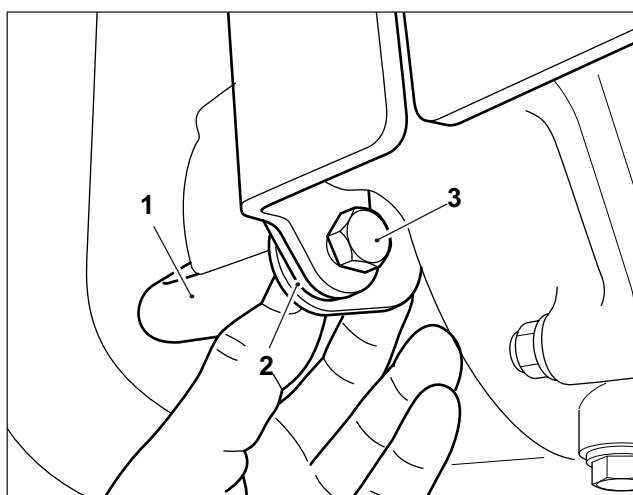
11 Remove the sump guard front mounting brackets lower fixing (1), washers (2) and lock nut (3). Retain the fixing, washers and lock nut for reuse if the engine guards are removed.



10 Position the lower mounting of the left hand engine guard (1) over the sump guard mounting bracket (2) and align with the hole through the bottom of the motorcycle frame. Fit an M8 fixing (3) from the kit. Do not fully tighten the fixing at this stage.



13 Position the lower mounting of the right hand engine guard (1) over the sump guard mounting bracket (2) and align with the hole through the bottom of the motorcycle frame. Fit an M8 fixing (3) from the kit. Do not fully tighten the fixing at this stage.

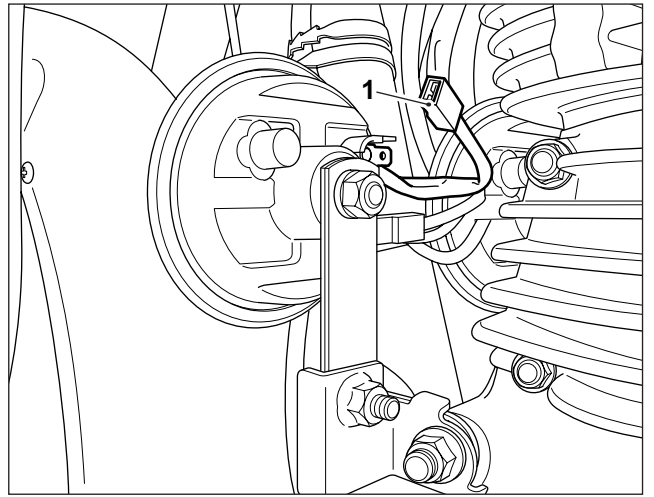


12 Tighten the engine guard upper fixing to **45Nm**. Tighten the engine guard lower fixings to **25Nm**.

All Motorcycles

13 Reconnect the left hand and right hand horn connections.

14 Reconnect the battery, positive connection first.



 **WARNING: After fitting any genuine Royal Enfield accessory always ride the motorcycle with caution and allow time to become familiar with any change in the motorcycle handling characteristics. Failure to become familiar with any change in the motorcycle handling characteristics may cause the motorcycle to become unstable and result in an accident.**