

Part Number:
1990536

Models:
Interceptor Bear 650 (all years)

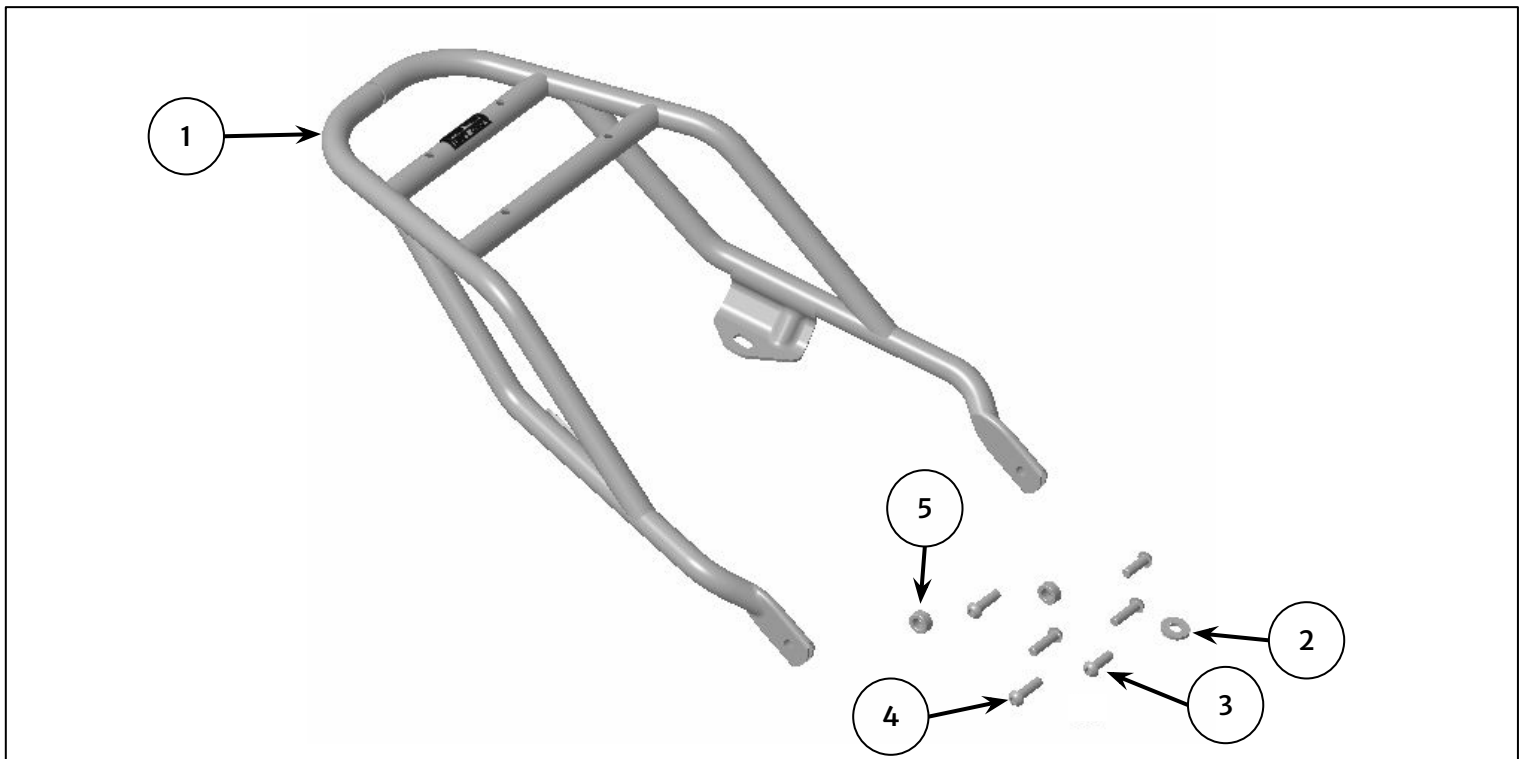
WARNING: Royal Enfield genuine accessories are designed to fit only the specific Royal Enfield motorcycle(s) that are specified above. They should not be fitted to any other type of motorcycle. Pay particular attention to the warnings and cautions contained in this instruction, failure to do so may result in an incorrect installation of the accessory which could result in an unsafe riding condition and possible accident. If in any doubt always seek help from your authorised Royal Enfield dealer.

WARNING: Before starting any accessory kit installation ensure the motorcycle is supported in a stable condition. Failure to support the motorcycle correctly could lead to motorcycle damage or personal injury.

WARNING: All fixings must be tightened to the torque values specified in this instruction. Failure to tighten fixings to the correct torque could result in an unsafe riding condition and possible accident

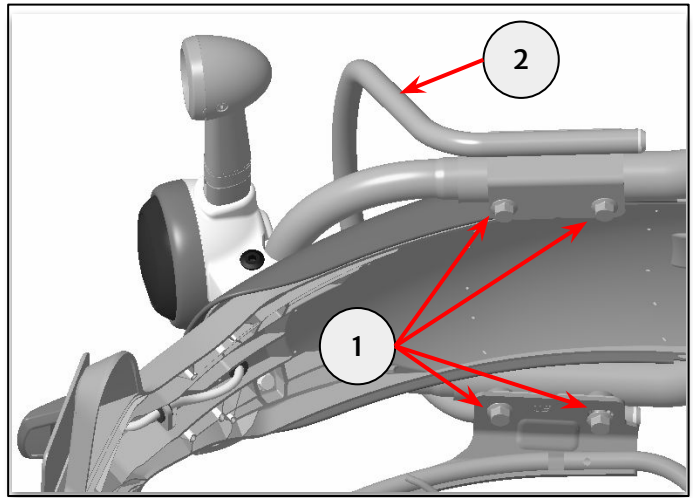
CAUTION: Care should be taken when fitting any accessory kit. Incorrect handling of kit components or the use of incorrect tools could lead to component or motorcycle damage.

NOTE: The content of this instruction is subject to change at any time without notice or liability. Royal Enfield reserves the right to revise the information presented at any time.



Item	Description	Qty
1	Rear Rack	1
2	Washer	1
3	Fixing, M8 x 25mm	2
4	Fixing, M8 x 30mm (for use with Pannier Rails 1990524)	4
5	Spacer (for use with Pannier Rails 1990524)	2

1 Remove the four fixings (1) securing the grab rail (2). Retain the fixings for reuse, retain the grab rail for reuse if the motorcycle is to be returned to its original condition.

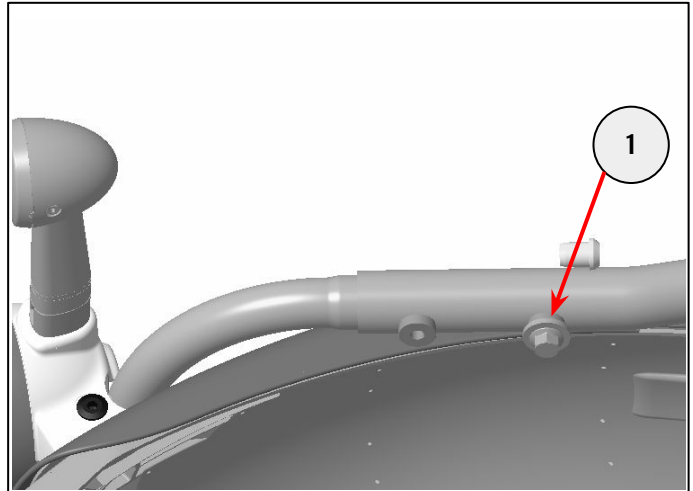


12mm socket and ratchet

2 Reuse a fixing (1) from step 1 and refit to the front right grab rail boss. Tighten to 25Nm.

For models without a saree guard

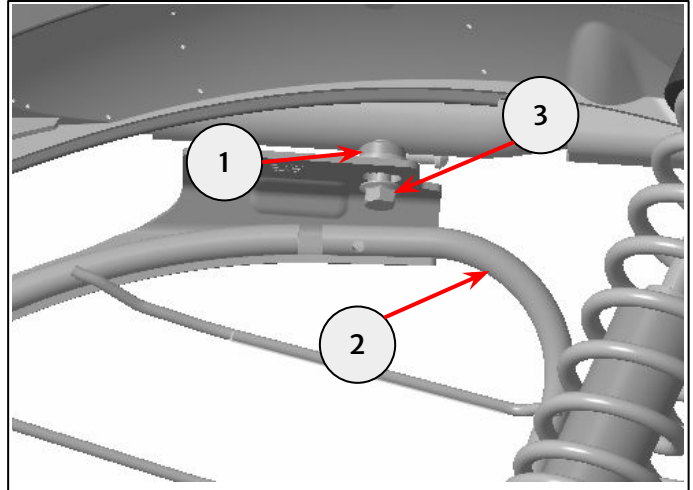
Reuse a fixing (1) from step 1 and refit to the front left grab rail boss. Tighten to 25Nm.



12mm socket and torque wrench

3 For models with a saree guard only

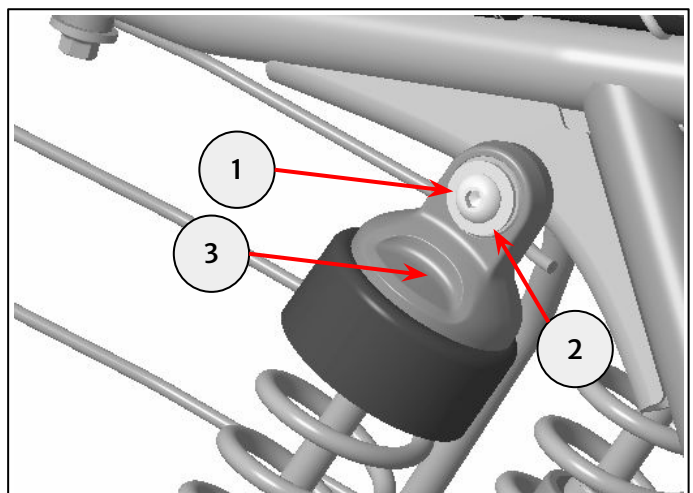
Place a washer from the kit (1) between the saree guard (2) and front left grab rail boss (3). Refit the grab rail fixing. Do not fully tighten at this stage.



12mm socket and ratchet

4 Remove the left and right side rear suspension unit upper mount fixings (1) and washers (2), being careful not to knock the rear suspension units (3) off their mount bosses.

Discard fixings and source replacements from a Royal Enfield Spares Dealer if the motorcycle is to be returned to its original condition.



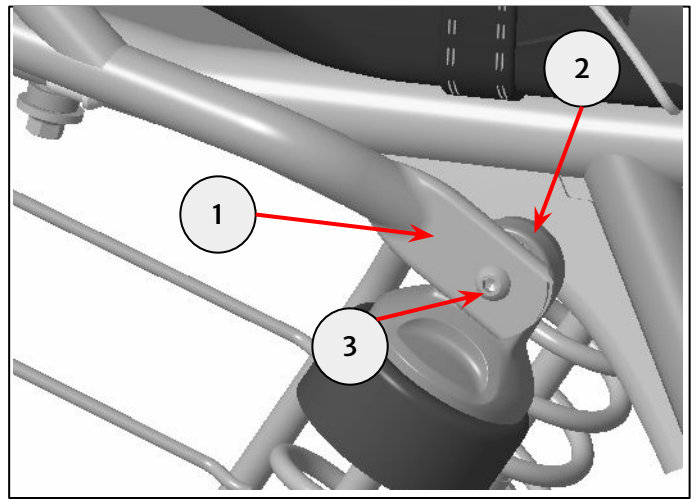
6mm hexagonal bit and ratchet

For fitment without Pannier Rails

5 Align the rear rack (1) with the rear suspension unit upper mounts (2). Secure with the M8x25mm fixings from the kit (3). Do not fully tighten at this stage.



5mm hexagonal bit and ratchet

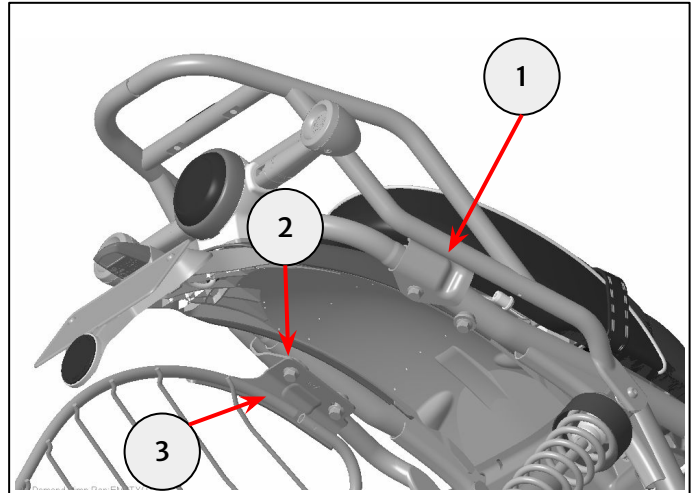


6 Align the rack rear mounts (1) with the rear grab rail mount bosses on the frame (2). For models with a saree guard, fit the rack between the saree guard (3) and the boss (2) on the left side. Secure using the fixings removed in step 1.

Tighten to 25Nm.



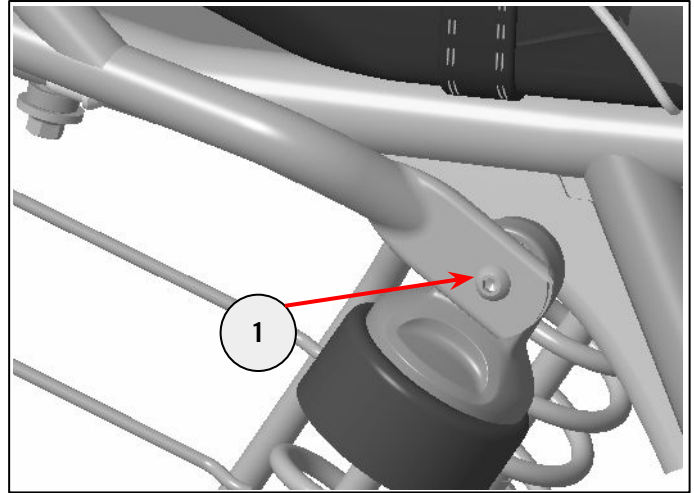
12mm socket and torque wrench



7 Tighten the front left and right rack fixings (1) to 22Nm.



5mm hexagonal bit and torque wrench



For fitment with Pannier Rails (1990524)

The M8 x 30mm fixings and spacers are for use in conjunction with the pannier rails. Refer to pannier rail instruction for fitting guidance.

Warning:

Do not exceed 5kg payload. Ensure contents are adequately secured before use.