




**Part Number:**  
1990200, 1990230, KXA00432

**Models:**  
Himalayan  
(452cc only)

 **WARNING:** Royal Enfield genuine accessories are designed to fit only the specific Royal Enfield motorcycle(s) that are specified above. They should not be fitted to any other type of motorcycle. Pay particular attention to the warnings and cautions contained in this instruction, failure to do so may result in an incorrect installation of the accessory which could result in an unsafe riding condition and possible accident. If in any doubt always seek help from your authorised Royal Enfield dealer.

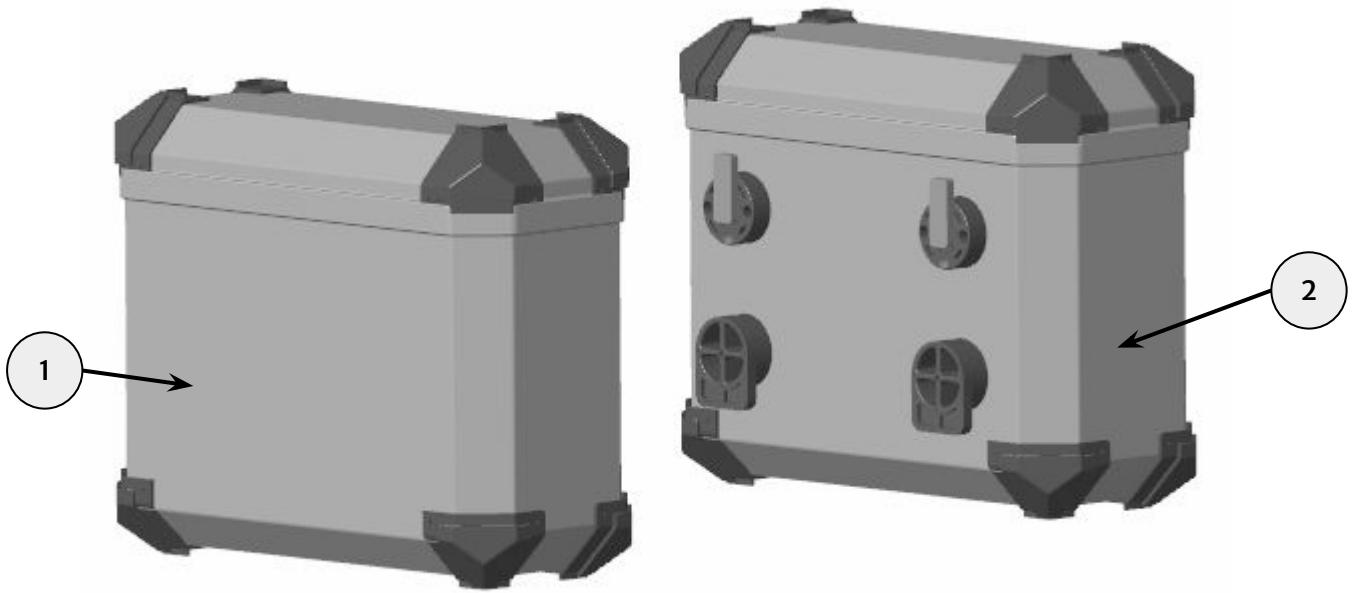
 **WARNING:** Before starting any accessory kit installation ensure the motorcycle is supported in a stable condition. Failure to support the motorcycle correctly could lead to motorcycle damage or personal injury.

 **WARNING:** All fixings must be tightened to the torque values specified in this instruction. Failure to tighten fixings to the correct torque could result in an unsafe riding condition and possible accident

 **CAUTION:** Care should be taken when fitting any accessory kit. Incorrect handling of kit components or the use of incorrect tools could lead to component or motorcycle damage.

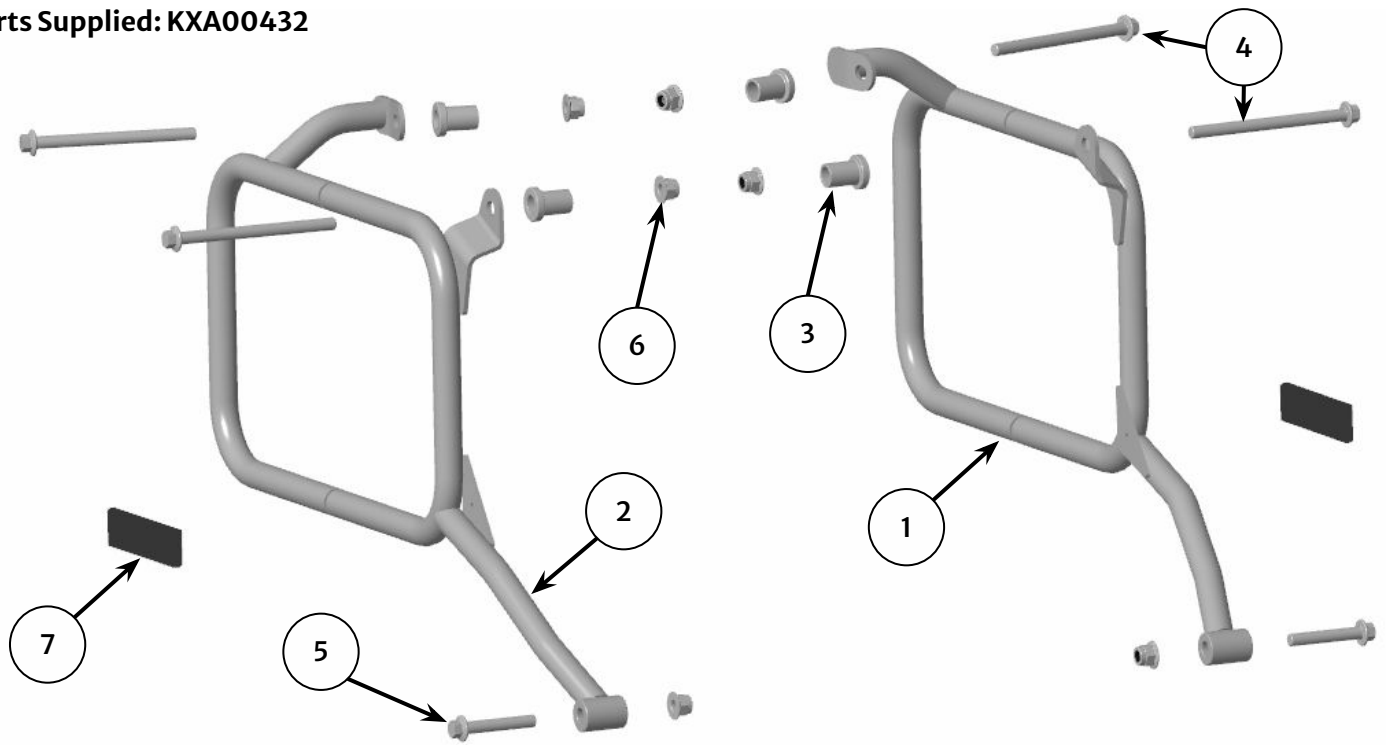
**NOTE:** The content of this instruction is subject to change at any time without notice or liability. Royal Enfield reserves the right to revise the information presented at any time.

Parts Supplied: 1990200, 1990230



Item	Description	Qty
1	Left hand pannier	1
2	Right hand pannier	1

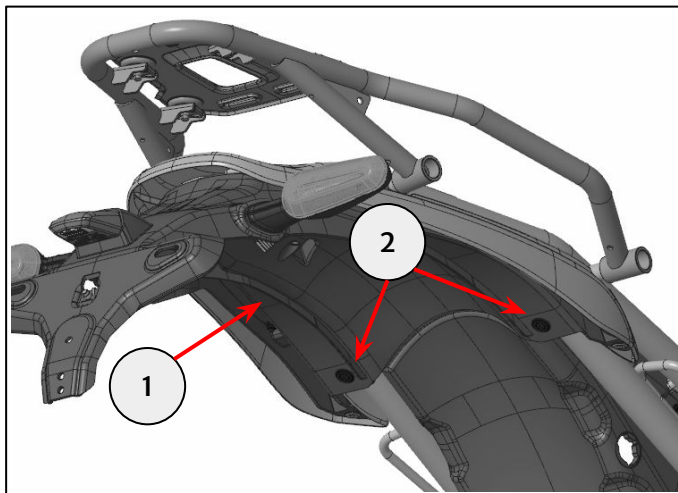
**Parts Supplied: KXA00432**



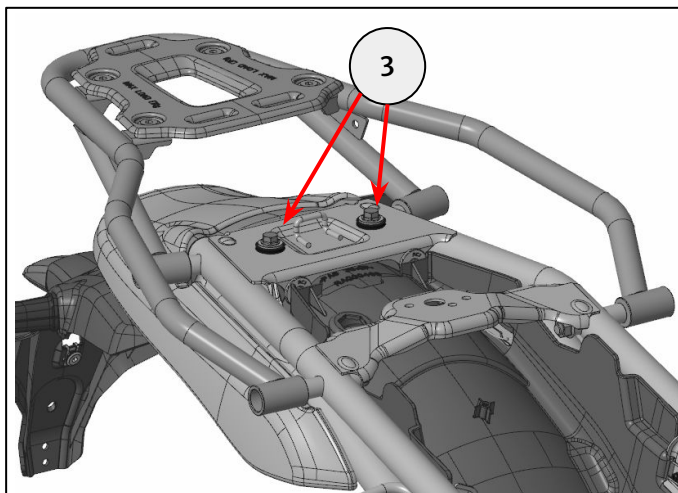
Item	Description	Qty
1	Left hand pannier rail	1
2	Right hand pannier rail	1
3	Spacer	4
4	Fixing, M8 x 105mm	4
5	Fixing, M8 x 50mm	2
6	Nut, M8	6
7	Reflector	2
8	Degreaser wipe (not shown)	1

**1** Remove the rider and pillion seats as described in the Owner's Manual.

**2** Remove the rear mudguard assembly (1) by first removing the two fixings located on the underside of the rear mudguard (2), and then the two fixings located beneath the pillion seat area (3). Retain the fixings for reuse and carefully place the rear mudguard assembly on the rear tyre.



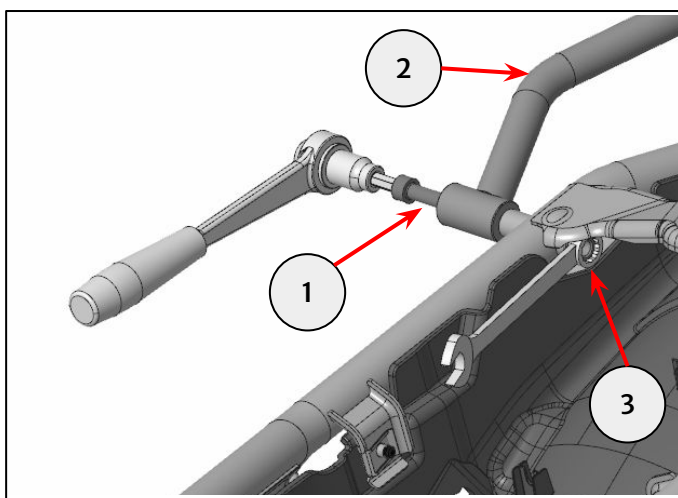
5mm hexagonal bit and ratchet  
10mm socket and ratchet



**3** Remove the front right hand fixing (1) securing the luggage rack (2). Retain the fixings for reuse if the motorcycle is to be returned to its original condition.



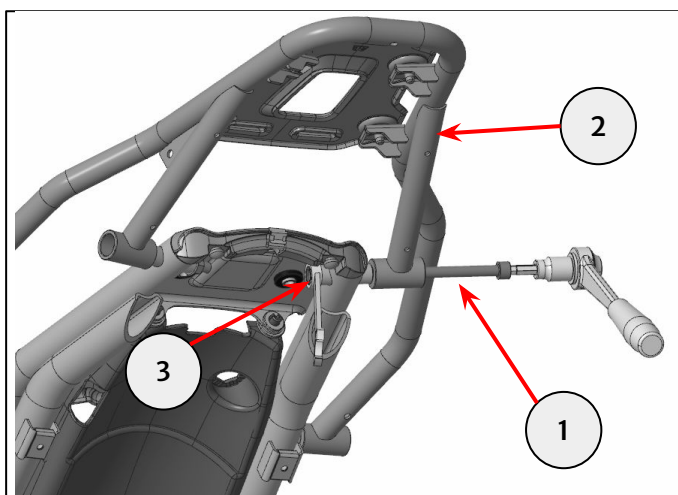
6mm hexagonal bit and ratchet  
12mm spanner



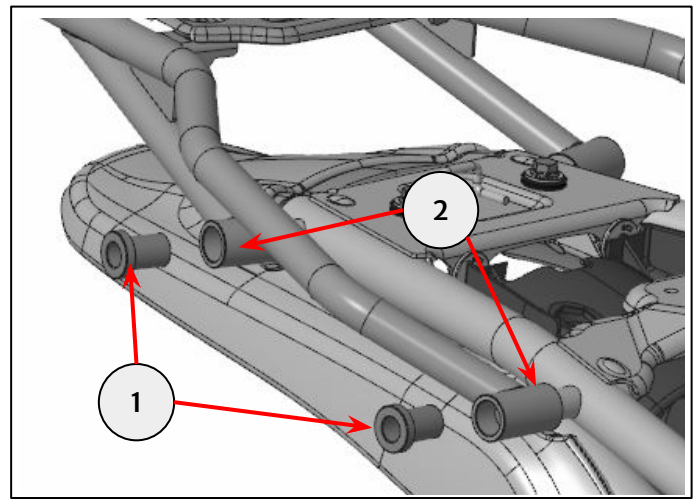
**4** Remove the rear right hand fixing (1) securing the luggage rack (2). Retain the fixings for reuse if the motorcycle is to be returned to its original condition.



6mm hexagonal bit and ratchet  
12mm spanner



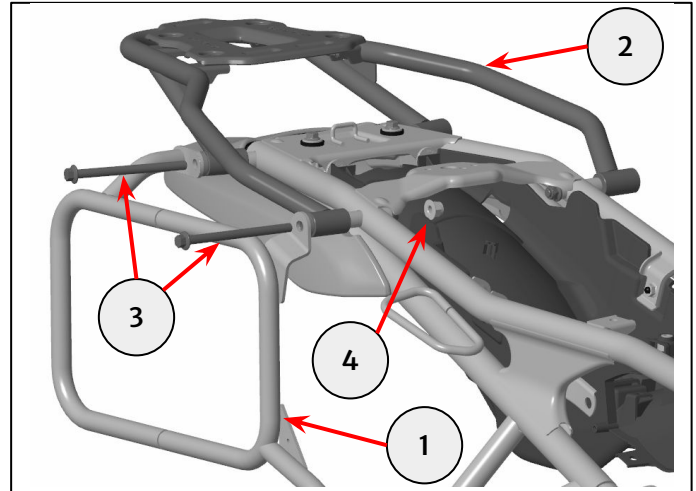
**5** Collect two spacers (1) from the kit and place within the mounting bosses within the luggage rack (2).



**6** Assemble the right hand pannier rail (1) to the luggage rack (2) with two M8 x 105mm fixings (3) and two M8 nuts (4) from the kit. Do not fully tighten the fixing at this stage.



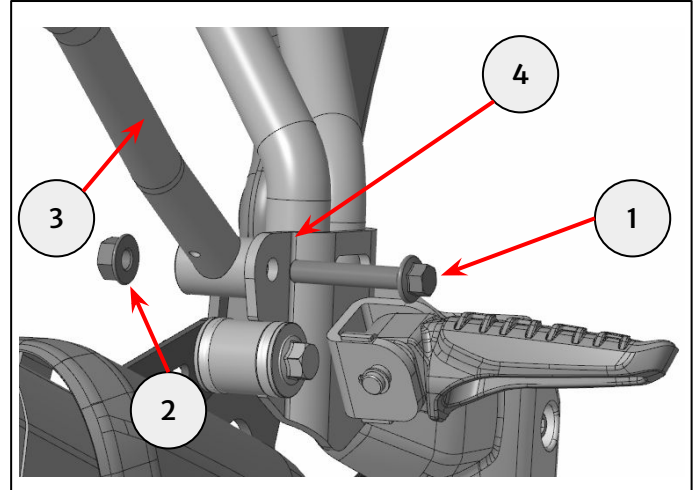
10mm socket and ratchet  
13mm spanner



**7** Collect an M8 x 50mm fixing (1) and M8 nut (2) from the kit and secure the pannier rail (3) to the pillion footrest mount (4) as shown.



10mm socket and ratchet  
13mm spanner



**8** Tighten all fixings to 45Nm.


**9** Repeat steps 3-8 for the left hand side.




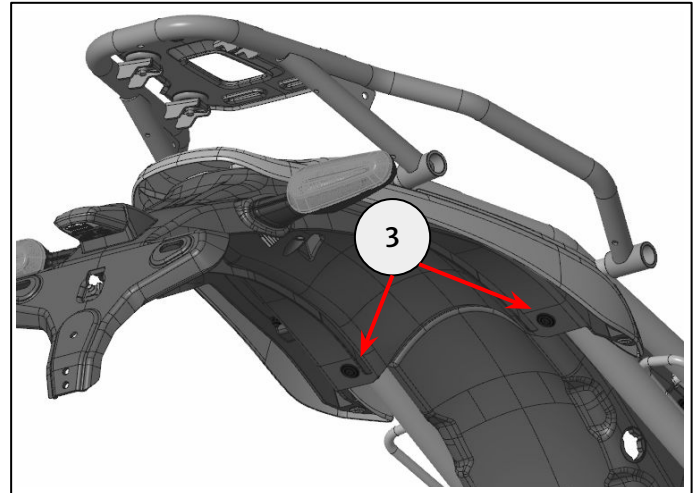
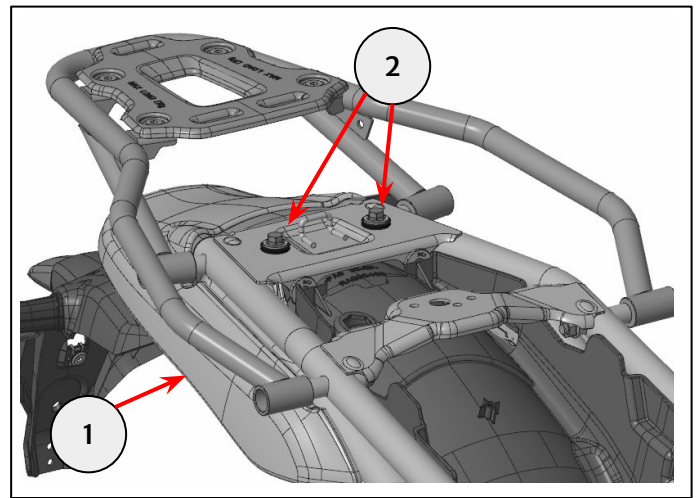
**WARNING:** After fitting any genuine Royal Enfield accessory always ride the motorcycle with caution and allow time to become familiar with any change in the motorcycle handling characteristics. Failure to become familiar with any change in the motorcycle handling characteristics may cause the motorcycle to become unstable and result in an accident.

**10** Refit the rear mudguard assembly (1) by first assembling the two fixings located below the pillion seat (2), followed by the two fixings located on the underside of the rear mudguard (3).

Tighten all fixings to **10Nm**.

	5mm hexagonal bit and torque wrench
--	-------------------------------------

	10mm socket and torque wrench
--	-------------------------------



**11** Refit the rider and pillion seats as described in the Owner's Manual.

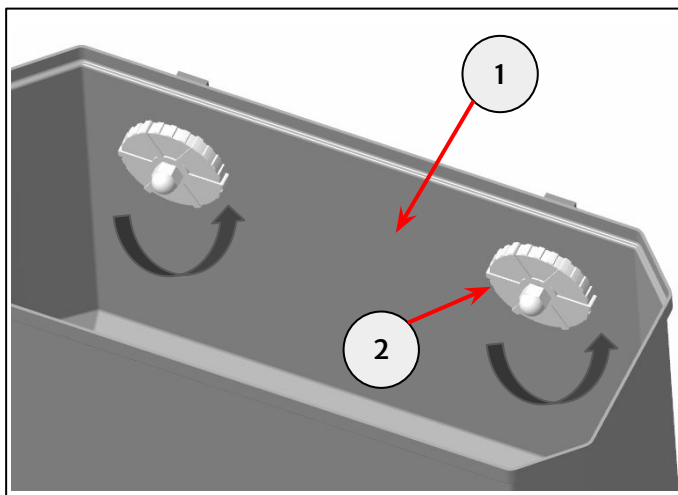


**WARNING:** After fitting any genuine Royal Enfield accessory always ride the motorcycle with caution and allow time to become familiar with any change in the motorcycle handling characteristics. Failure to become familiar with any change in the motorcycle handling characteristics may cause the motorcycle to become unstable and result in an accident.

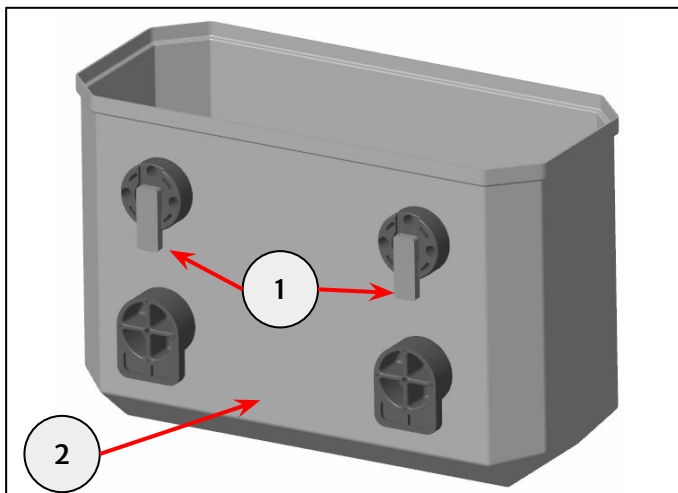


## Installation of Panniers

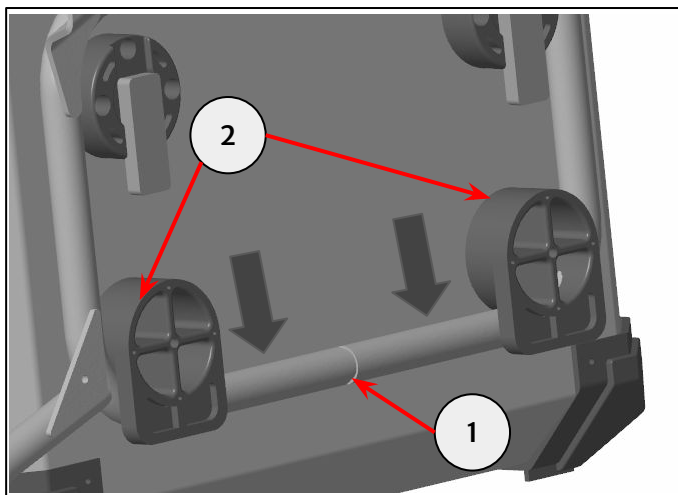
**12** Collect the left hand pannier from the kit. From inside the pannier (1), loosen the upper mount fixings by hand (2).



**13** Adjust the position of the upper mount retaining bars (1) until they are facing towards the bottom of the pannier (2) as shown.



**14** Position the pannier on the left hand pannier rail (1) ensuring the lower pannier mounts (2) are located inside the pannier rail (1). Push the lower pannier mounts (2) onto the pannier rail (1) as shown.



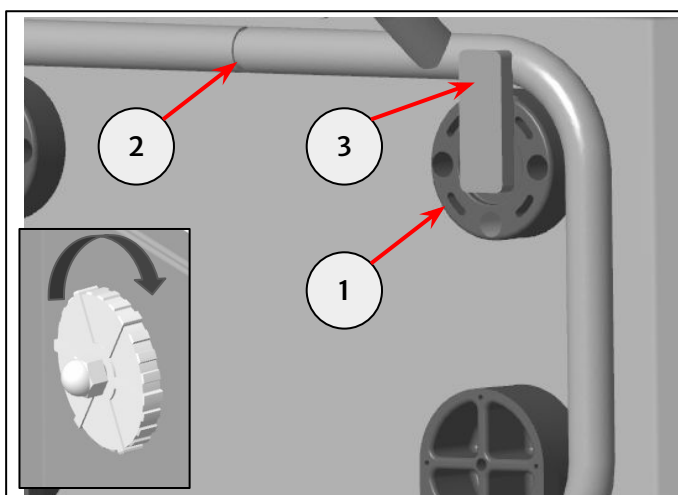
**15** Position the pannier upper mounts (1) inside the pannier rail (2). Adjust the position of the pannier upper mount retaining bars (3) until they are across the pannier rail (2).

From inside the pannier, tighten the upper mount fixings (4) to secure the pannier to the pannier rail by hand.

Repeat steps 12 to 15 for the right hand pannier.

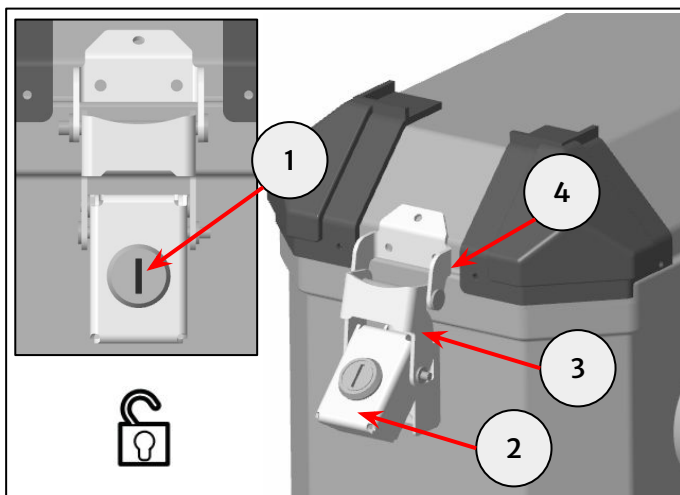


**CAUTION:** Ensure there is sufficient clearance between the pannier rail and upper mount retaining bars to prevent damage to the pannier rail when adjusting the position of the upper mount retaining bars.



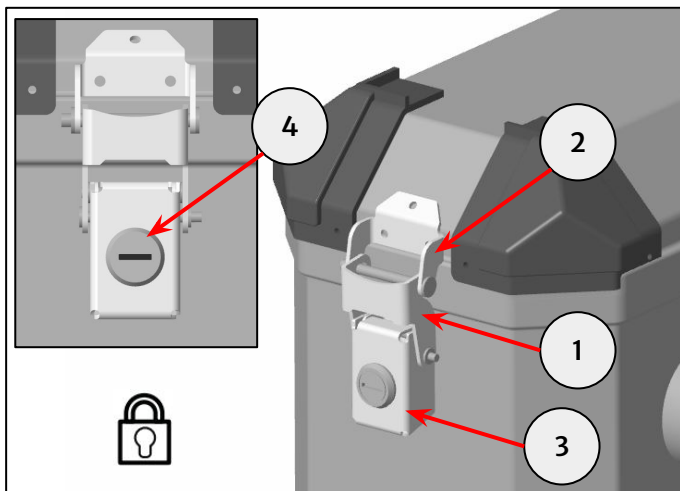
## Pannier Operation

**16** To open a pannier. Insert the key (1) into the pannier lock and turn the key to the un-locked position, as shown. Remove the key. Lift the lock section (2) of the latch to release the latch (3) from the pannier lid (4).



**17** To secure a pannier lid in the closed position, ensure the latch (1) is located on the pannier lid (2) and press the lock section (3) of the latch down to secure the pannier lid.

Insert the key (4) into the pannier lock and turn the key to the locked position, as shown. Remove the key.

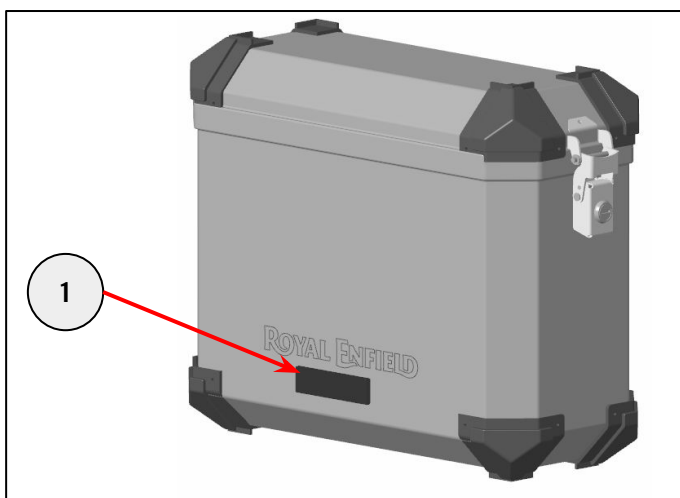


## Reflector Fitment

**17** Using the wipe provided in the kit, clean the area below the logo on each pannier. Allow to fully dry.

**18** Peel the backing paper from the reflector (1) and stick to the pannier and press firmly, ensuring the pad is centrally located on the pannier.

**When fitting self-adhesive parts care must be taken to make sure positioning is correct and accurate. Once the adhesive has been attached to the mounting surface, there is no satisfactory method of removal or re-positioning if incorrectly aligned. Initial bonding is instant, full bonding is achieved after 72 hours at room temperature.**



**WARNING:** After fitting any genuine Royal Enfield accessory always ride the motorcycle with caution and allow time to become familiar with any change in the motorcycle handling characteristics. Failure to become familiar with any change in the motorcycle handling characteristics may cause the motorcycle to become unstable and result in an accident.