




Part Number:
KXA00226, KXA00336

Models:
SHOTGUN 650

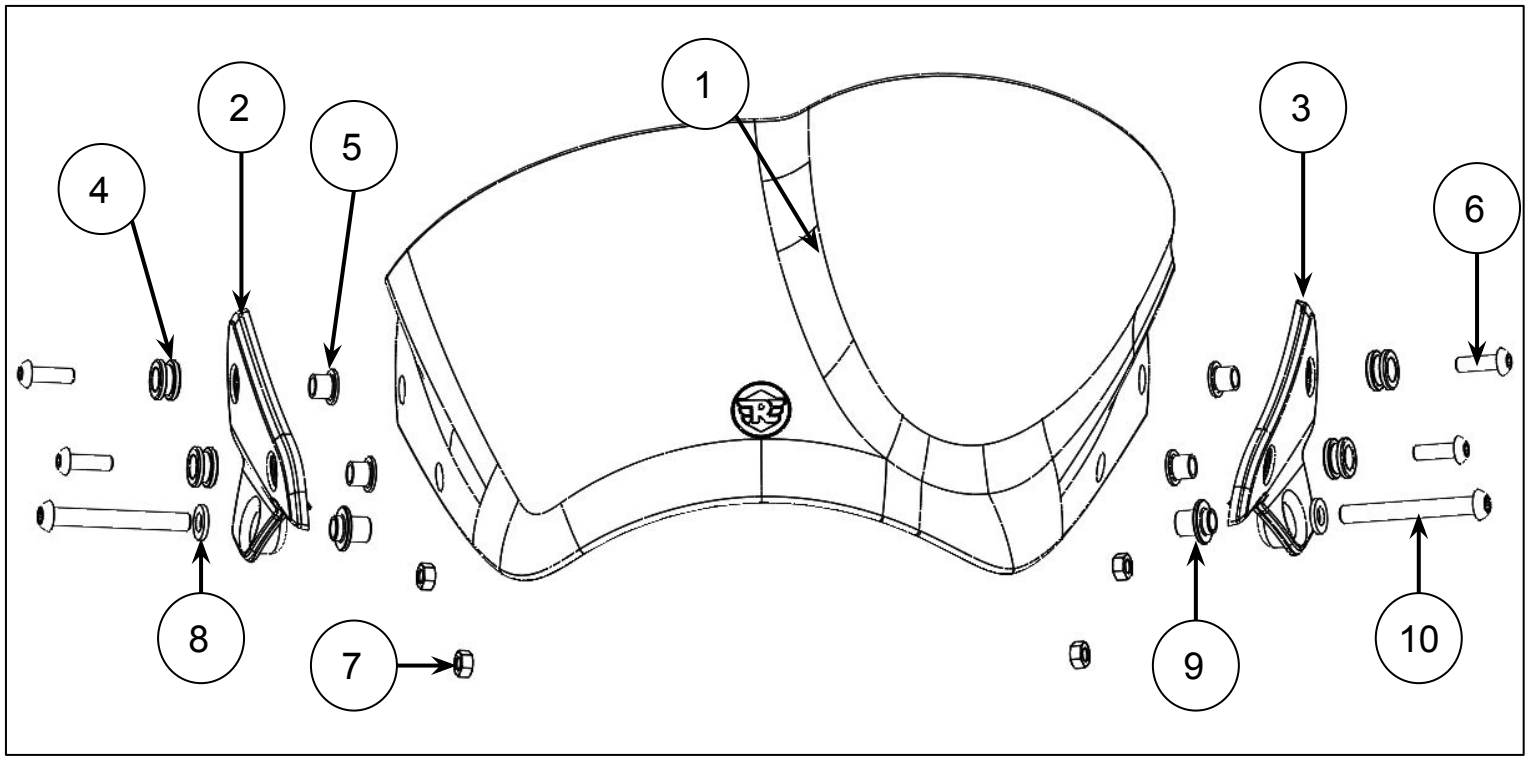
 **WARNING:** Royal Enfield genuine accessories are designed to fit only the specific Royal Enfield motorcycle(s) that are specified above. They should not be fitted to any other type of motorcycle. Pay particular attention to the warnings and cautions contained in this instruction, failure to do so may result in an incorrect installation of the accessory which could result in an unsafe riding condition and possible accident. If in any doubt always seek help from your authorised Royal Enfield dealer.

 **WARNING:** Before starting any accessory kit installation ensure the motorcycle is supported in a stable condition. Failure to support the motorcycle correctly could lead to motorcycle damage or personal injury.

 **WARNING:** All fixings must be tightened to the torque values specified in this instruction. Failure to tighten fixings to the correct torque could result in an unsafe riding condition and possible accident

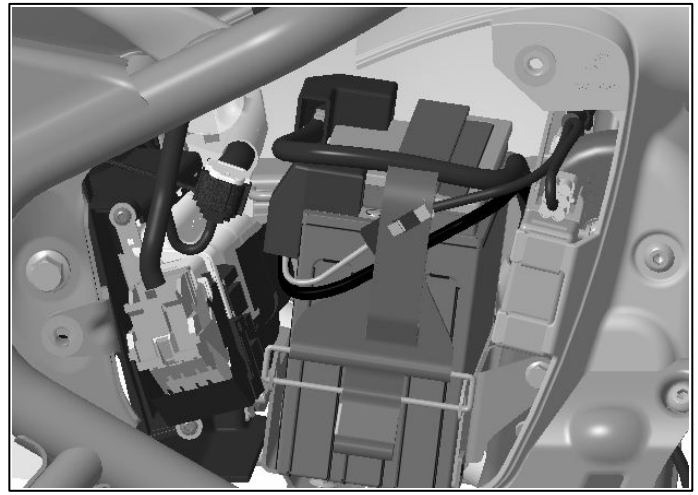
 **CAUTION:** Care should be taken when fitting any accessory kit. Incorrect handling of kit components or the use of incorrect tools could lead to component or motorcycle damage.

NOTE: The content of this instruction is subject to change at any time without notice or liability. Royal Enfield reserves the right to revise the information presented at any time.

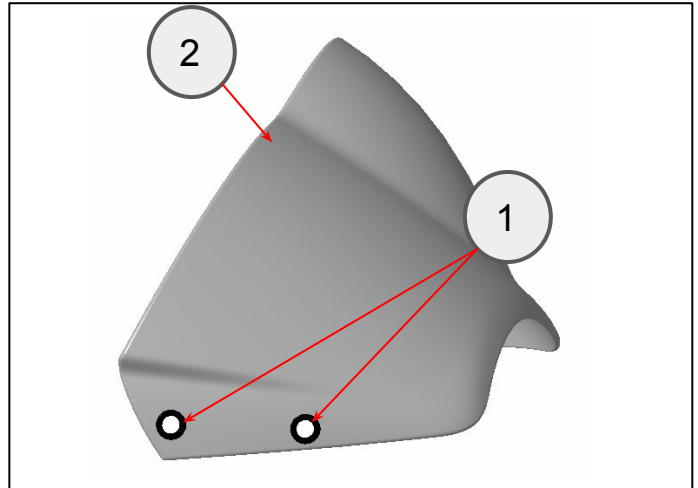


Item	Description	Qty
1	Tinted urban flyscreen	1
2	Urban flyscreen mount, Right hand	1
3	Urban flyscreen mount, Left hand	1
4	Rubber grommet	4
5	Flanged insert, top hat	4
6	Fixing, M5 x 16mm	4
7	Nut, M5	4
8	Washer, 6.4 x 12 x 1.6mm	2
9	Flanged insert, M6	2
10	Fixing, M6 x 50mm	2
11	Alcohol wipe (not shown)	1
12	Paint protection tape (not shown)	2

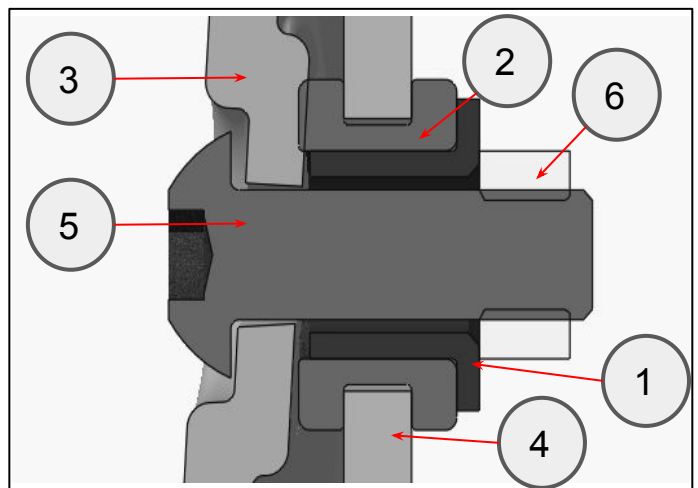
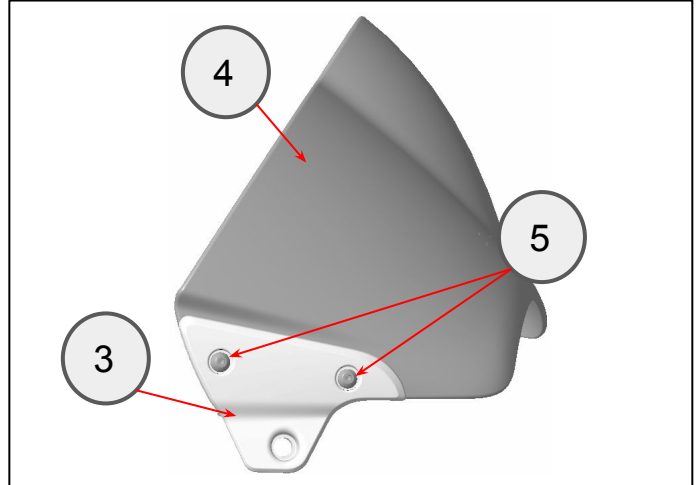
1 Remove the side cover and disconnect the battery, as described in the Owner's Manual.



2 Fit two rubber grommets (1) into the Flyscreen (2).



3 Fit two flanged inserts (1) in the rubber grommets (2). Fix the right hand bracket (3) on the flyscreen (4) using 2 M5 x 16 mm fixings (5) and 2 M5 nuts (6) from the kit.

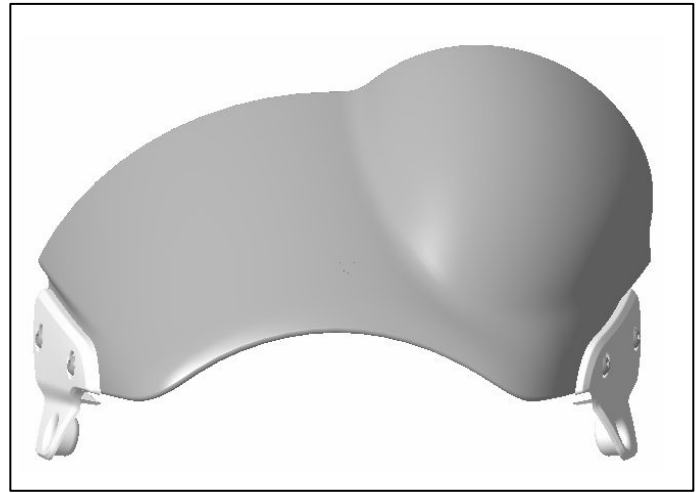


3mm hexagonal socket and ratchet



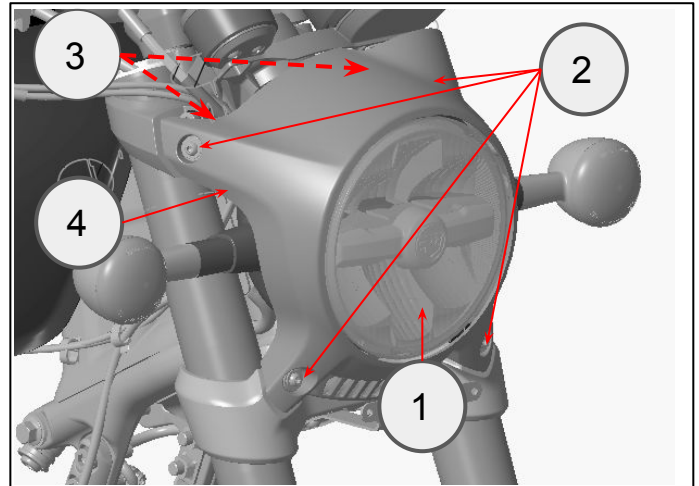
8mm spanner

4 Repeat steps 2 – 3 on the left side.



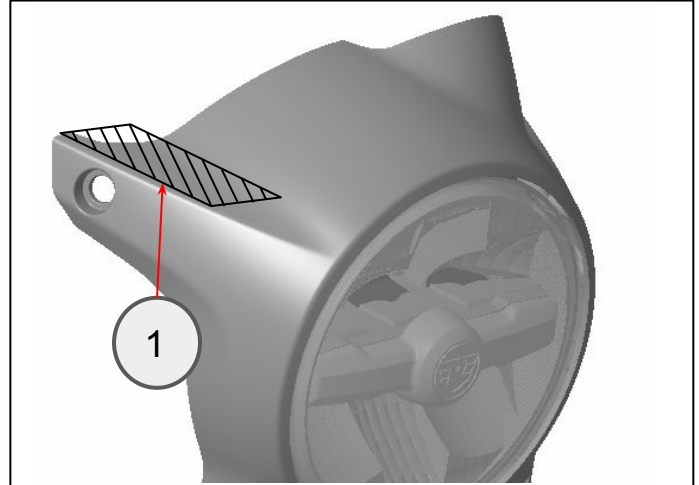
5 Remove the headlamp assembly (1) by removing the fixings (2). Take care when removing the spacers (3) behind the casquette (4). Disconnect the headlamp connector.

Retain the spacers for reuse.
Retain the fixings for reuse if the motorcycle is to be returned to its original condition.

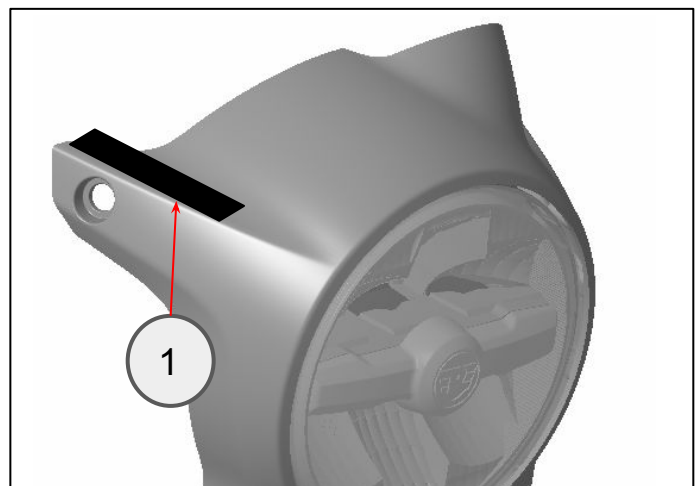


4mm hexagonal bit and ratchet

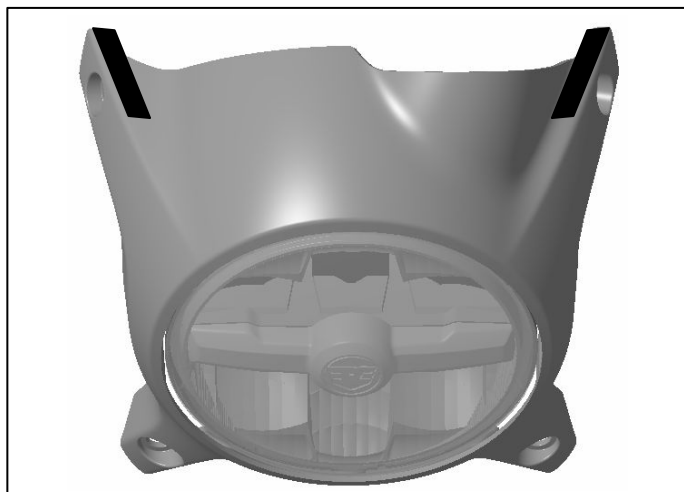
6 Clean the casquette (1) with the alcohol wipe from the kit.



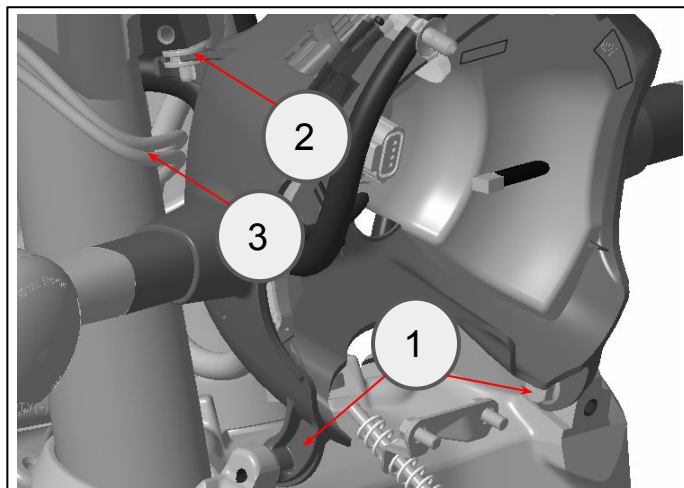
7 Position the paint protection tape (1) on the casquette.



8 Repeat steps 6 - 7 on the left side.



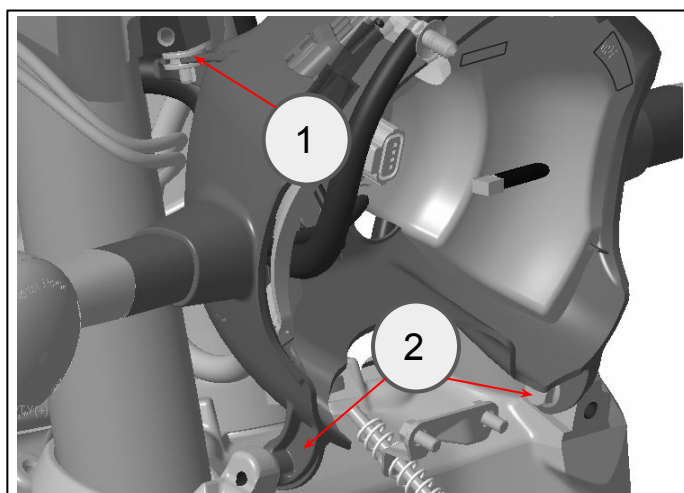
9 Remove the headlamp housing fixings (1). Remove the housing from the upper rubber grommets (2). Rotate the housing forward. Move the throttle cables (3) under the upper fixing (2).



10mm socket and ratchet

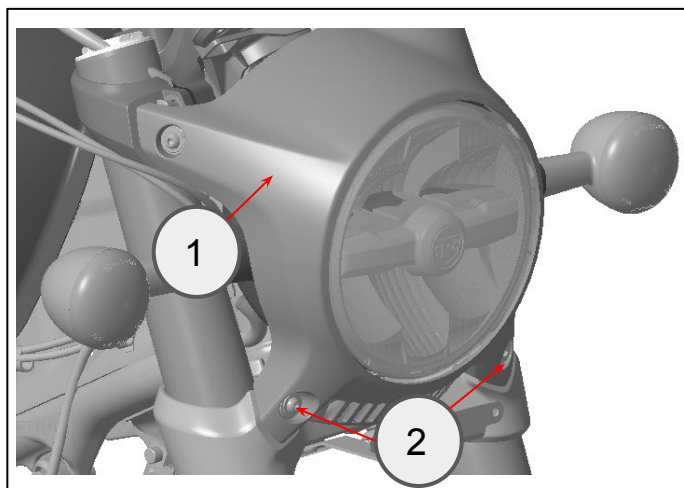
10 Refit the housing in the rubber grommets (1). Fit the fixings (2) removed in step 9.

Tighten the fixings (2) to **10 Nm**.



10mm socket and torque wrench

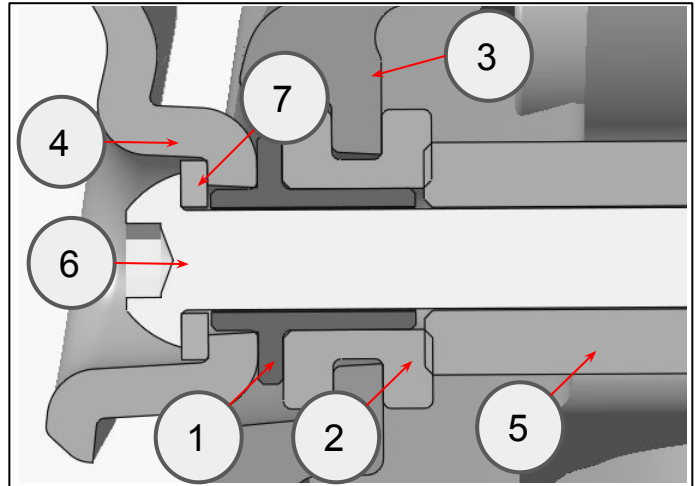
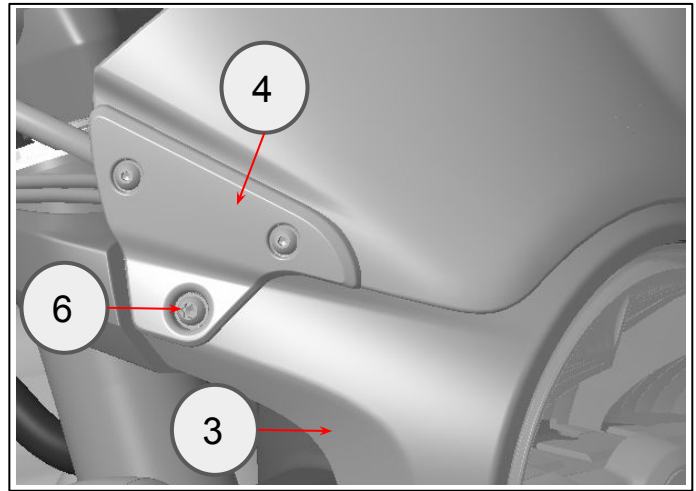
11 Reconnect the headlamp connector. Align the headlamp assembly (1) with the lower yoke. Loosely fit the fixings (2) removed in step 5.



4mm hexagonal bit and ratchet

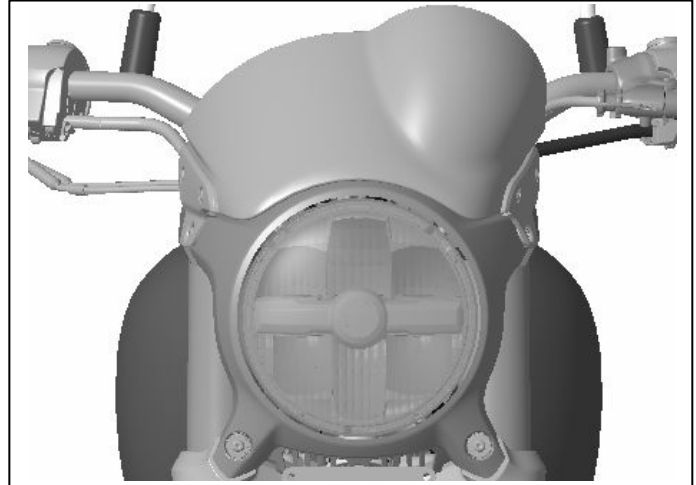
12 Position the flanged insert (1) in the rubber grommet (2) fitted in the casquette (3). Position the Flyscreen bracket (4) on the flanged insert (1). Align the flanged insert (1) and spacer (5). Fit the M6 x 50mm fixings (6) and washer (7) from the kit.

Tighten the fixings to **7 Nm**.
Tighten the fixings from step 5 to **7 Nm**.

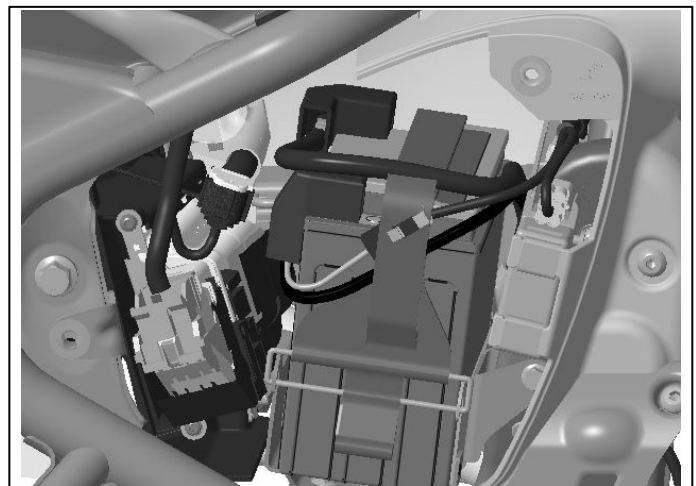


4mm hexagonal bit and torque wrench

13 Repeat step 12 on the left side.



14 Reconnect the battery and reassemble the side cover as described in the Owner's Manual.





WARNING: After fitting any genuine Royal Enfield accessory always ride the motorcycle with caution and allow time to become familiar with any change in the motorcycle handling characteristics. Failure to become familiar with any change in the motorcycle handling characteristics may cause the motorcycle to become unstable and result in an accident.