

Part Number:
KXA00253

Models:
SUPER METEOR



WARNING: Royal Enfield genuine accessories are designed to fit only the specific Royal Enfield motorcycle(s) that are specified above. They should not be fitted to any other type of motorcycle. Pay particular attention to the warnings and cautions contained in this instruction, failure to do so may result in an incorrect installation of the accessory which could result in an unsafe riding condition and possible accident. If in any doubt always seek help from your authorised Royal Enfield dealer.



WARNING: Before starting any accessory kit installation ensure the motorcycle is supported in a stable condition. Failure to support the motorcycle correctly could lead to motorcycle damage or personal injury.

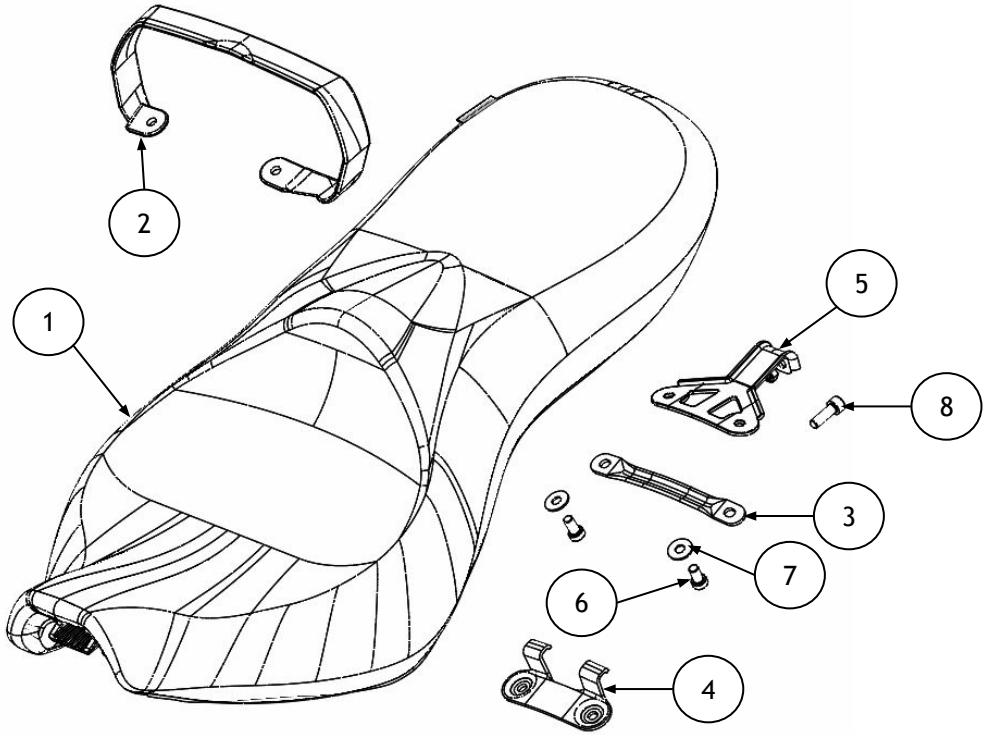


WARNING: All fixings must be tightened to the torque values specified in this instruction. Failure to tighten fixings to the correct torque could result in an unsafe riding condition and possible accident



CAUTION: Care should be taken when fitting any accessory kit. Incorrect handling of kit components or the use of incorrect tools could lead to component or motorcycle damage.

NOTE: The content of this instruction is subject to change at any time without notice or liability. Royal Enfield reserves the right to revise the information presented at any time.

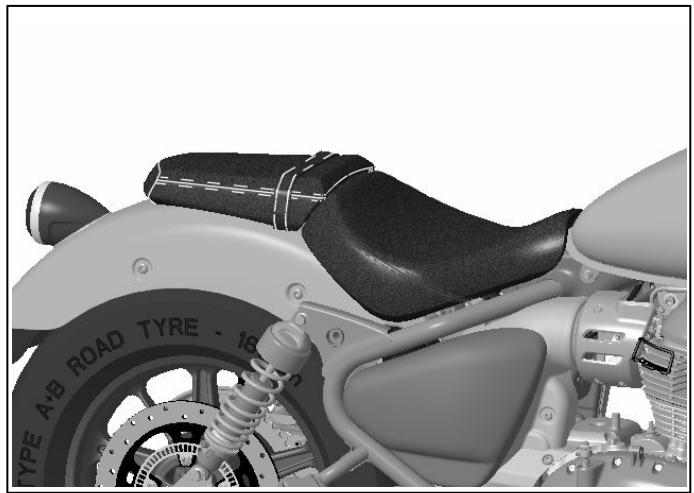


Item	Description	Qty
1	Seat assembly	1
2	Seat strap	1
3	Seat strap brace	1
4	Front bracket	1
5	Rear bracket assembly	1
6	Fixing, M8 x 16 mm	2
7	Washer, M8	2
8	Fixing, M8 x 25 mm	1

1 Remove the pillion and rider seats as described in the Owner's Manual. Retain both for reuse if the motorcycle is to be returned to its original condition.



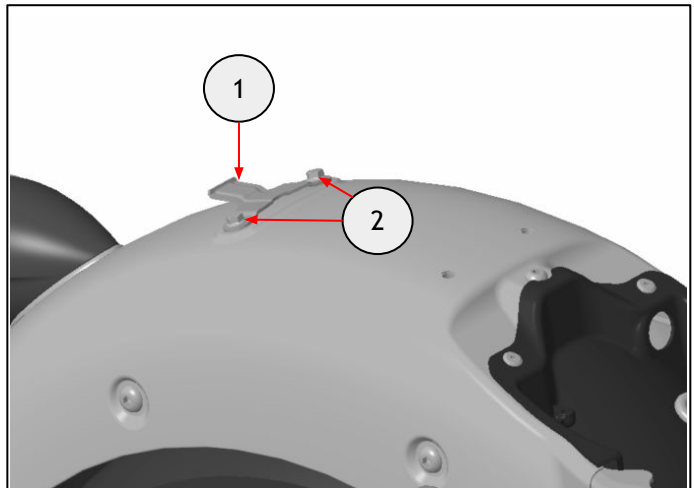
5mm hexagonal bit and ratchet



2 Remove the pillion seat bracket (1) by removing the fixings (2). Retain the fixings for reuse. Retain the brackets for reuse if the motorcycle is to be returned to its original condition.



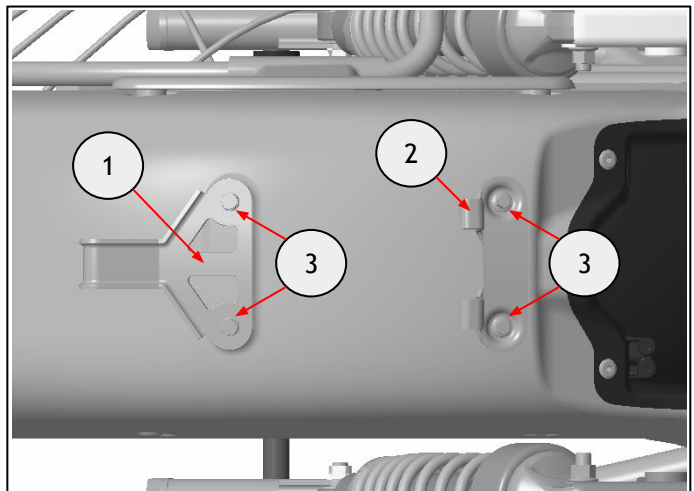
8mm socket and ratchet



3 Fit the rear (1) and front (2) seat brackets onto the mudguard using the fixings (3) removed in step 2. Tighten the fixings (3) to **15Nm**.



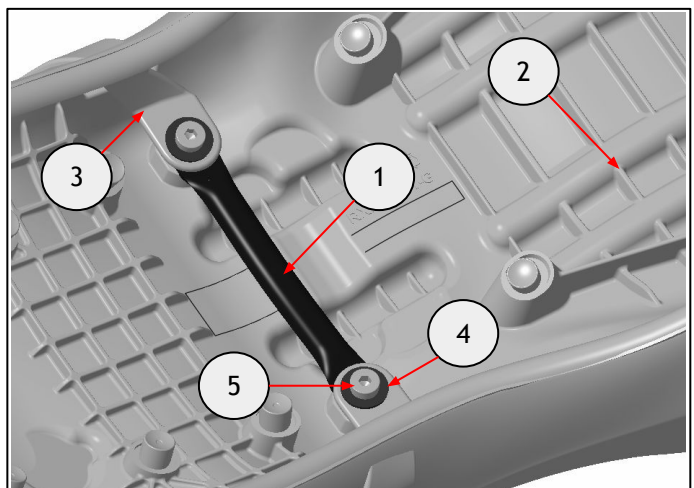
8mm socket and torque wrench



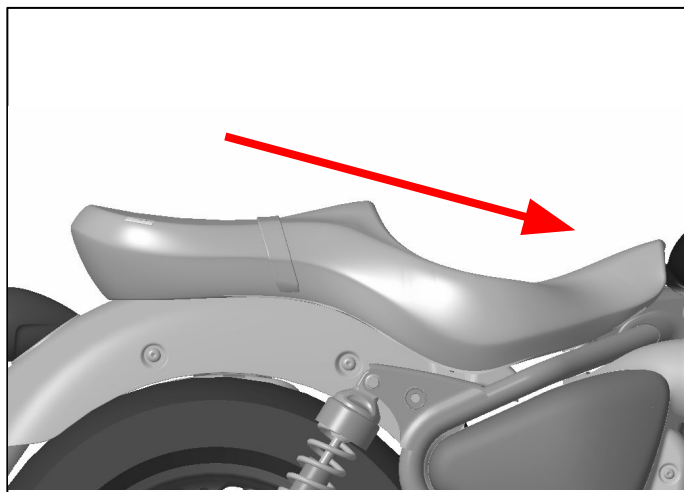
4 Position the strap brace (1) between the seat base (2) and the strap (3) then fix it using the M8 washers (4) and M8 x 16mm fixings (5) from the kit. Tighten the fixings (5) to **9Nm**.



5mm hexagonal bit and torque wrench

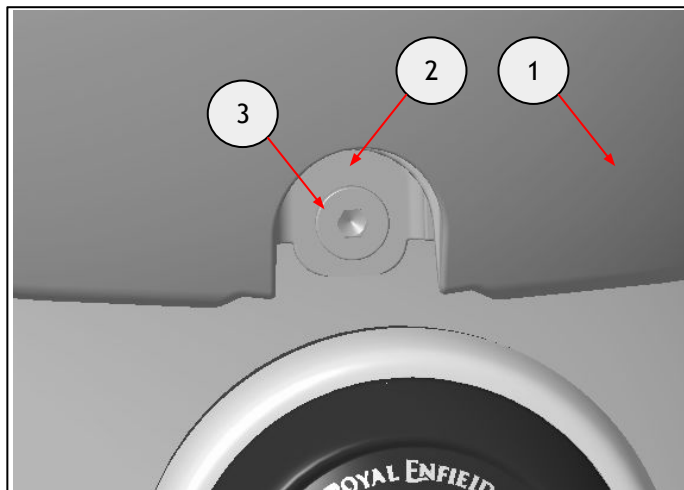


5 Slide the seat forward and down to put it in place.



6 Align the seat (1) with the rear bracket (2). Fit the M8 x 25 mm fixing (3).

Tighten the fixing (3) to **18 Nm**.



6mm hexagonal bit and 150mm extension and torque wrench



WARNING: After fitting any genuine Royal Enfield accessory always ride the motorcycle with caution and allow time to become familiar with any change in the motorcycle handling characteristics. Failure to become familiar with any change in the motorcycle handling characteristics may cause the motorcycle to become unstable and result in an accident.