

**Part Number:**  
KXA00333 & KXA00338

**Models:**  
Bullet 650

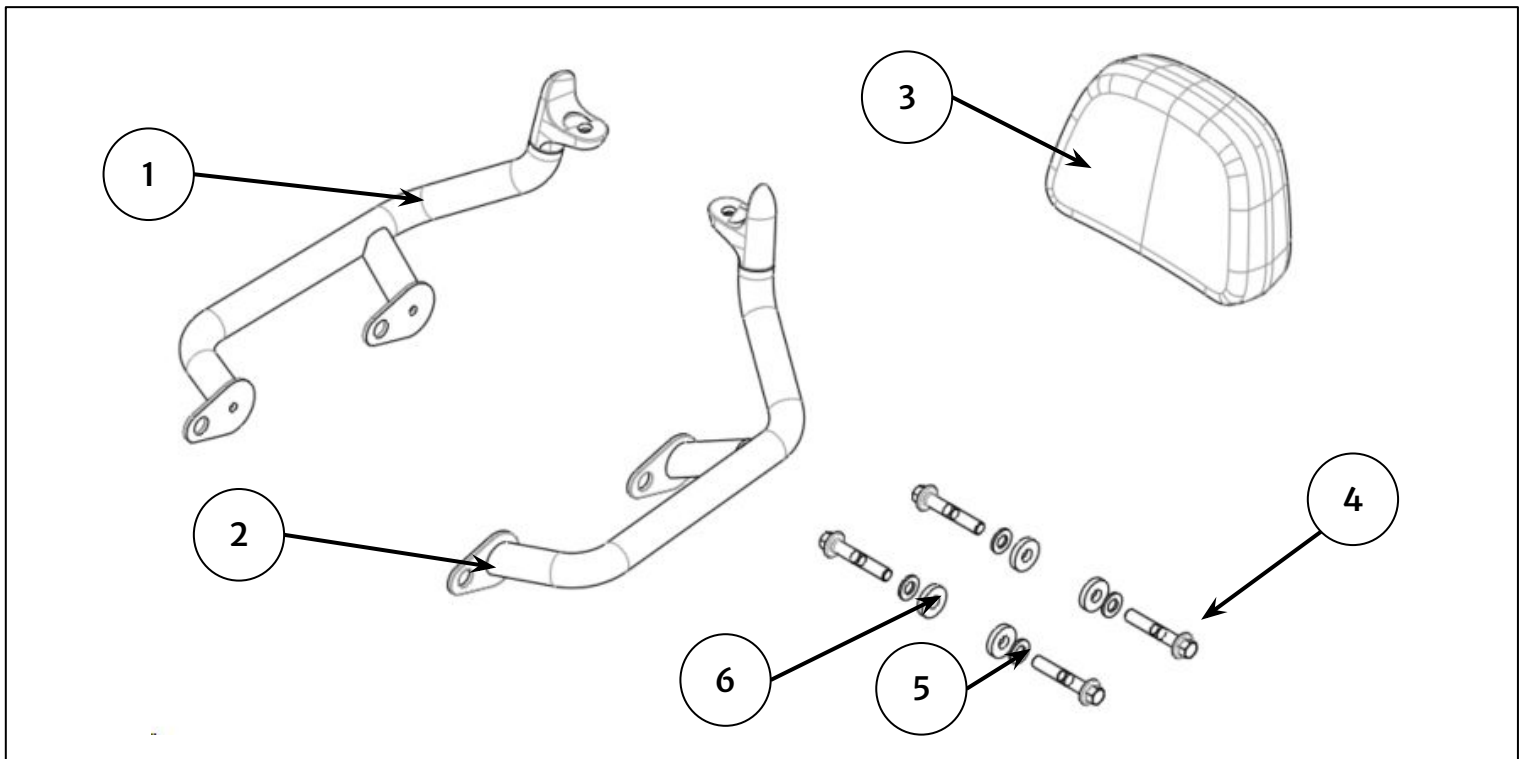
**WARNING:** Royal Enfield genuine accessories are designed to fit only the specific Royal Enfield motorcycle(s) that are specified above. They should not be fitted to any other type of motorcycle. Pay particular attention to the warnings and cautions contained in this instruction, failure to do so may result in an incorrect installation of the accessory which could result in an unsafe riding condition and possible accident. If in any doubt always seek help from your authorised Royal Enfield dealer.

**WARNING:** Before starting any accessory kit installation ensure the motorcycle is supported in a stable condition. Failure to support the motorcycle correctly could lead to motorcycle damage or personal injury.

**WARNING:** All fixings must be tightened to the torque values specified in this instruction. Failure to tighten fixings to the correct torque could result in an unsafe riding condition and possible accident

**CAUTION:** Care should be taken when fitting any accessory kit. Incorrect handling of kit components or the use of incorrect tools could lead to component or motorcycle damage.

**NOTE:** The content of this instruction is subject to change at any time without notice or liability. Royal Enfield reserves the right to revise the information presented at any time.



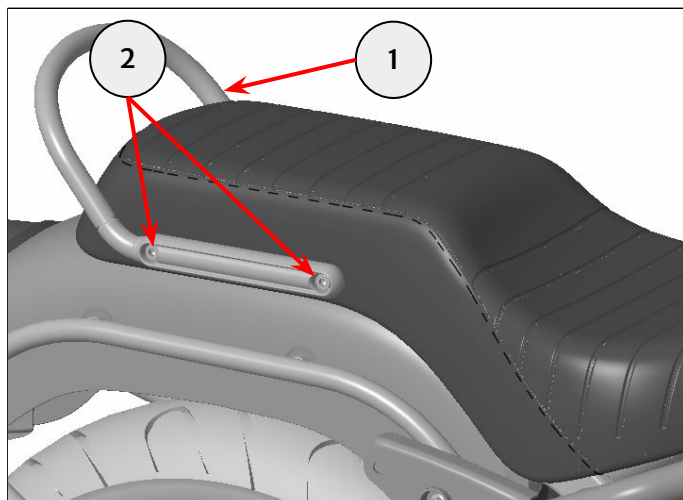
Item	Description	Qty
1	Right hand backrest rail	1
2	Left hand backrest rail	1
3	Backrest pad	1
4	Fixing, M8 x 45 mm	4
5	Washer, M8 x Ø21 mm	4
6	Washer, M8 x Ø16 mm	4

**1** Remove the grab rail (1) by removing the fixings (2). Retain the grab handle (1) and the fixings (2) for reuse if the motorcycle is to be returned to its original condition.

Repeat step 1 on the left hand side.



6 mm hexagonal bit and ratchet



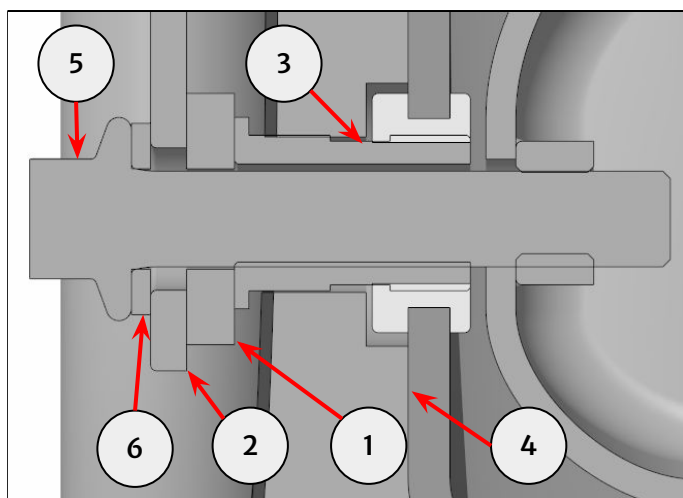
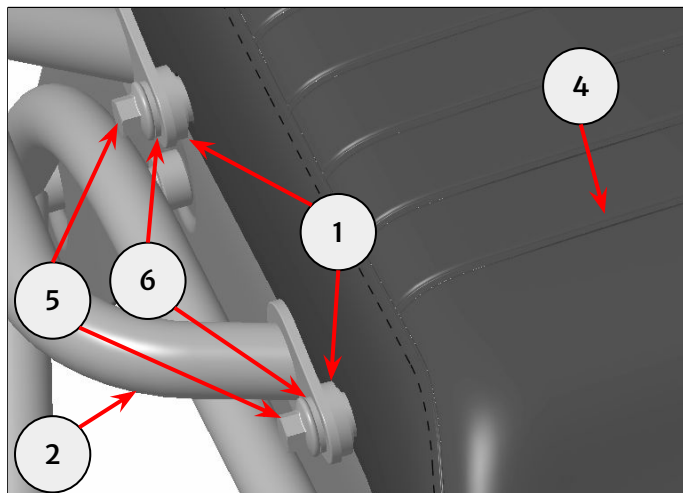
**2** Fit M8 x Ø21 mm washers (1) from the kit, between the backrest rail (2) and the sleeve (3) in the seat (4). Fit the M8 x 45 mm fixing (5) with the M8 x Ø16 mm washers (6) from the kit to secure.

Do not fully tighten the fixing at this stage.

Repeat step 2 for the left hand side.



10 mm socket and ratchet

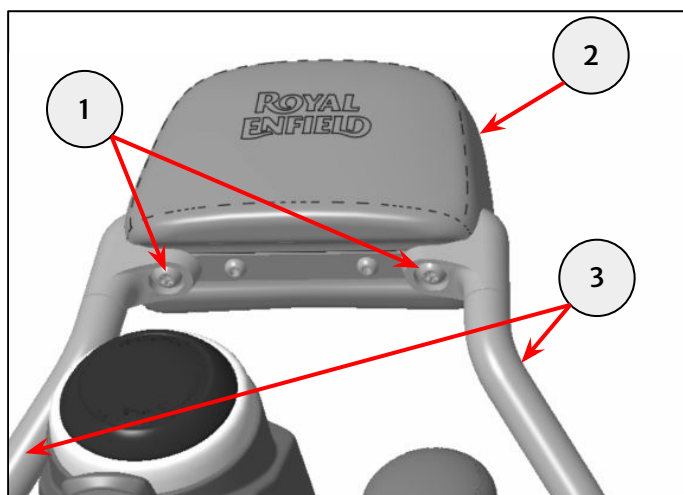


**3** Remove fixings (1) from the backrest pad (2). Align the backrest pad (2) on the backrest rails (3). Refit the fixings (1) to secure the backrest pad (2).

Tighten the fixings (1) to 25 Nm.



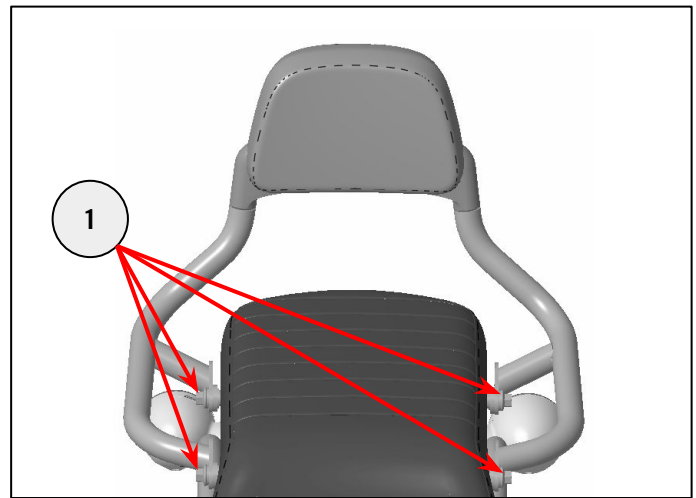
T40 Torx bit and torque wrench



**4 Tighten the fixings (1) to 25 Nm.**



10 mm socket and torque wrench



**WARNING:** After fitting any genuine Royal Enfield accessory always ride the motorcycle with caution and allow time to become familiar with any change in the motorcycle handling characteristics. Failure to become familiar with any change in the motorcycle handling characteristics may cause the motorcycle to become unstable and result in an accident.